

Product datasheet for **AP54048PU-N**

SRPX (Center) Rabbit Polyclonal Antibody

Product data:

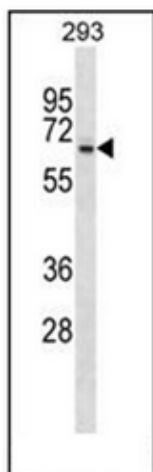
Product Type:	Primary Antibodies
Applications:	WB
Recommended Dilution:	ELISA: 1/1000. Western Blot: 1/100-1/500.
Reactivity:	Human
Host:	Rabbit
Isotype:	Ig
Clonality:	Polyclonal
Immunogen:	KLH conjugated synthetic peptide between 217-246 amino acids from the Central region of Human SRPX
Specificity:	This antibody recognizes Human SRPX (Center).
Formulation:	PBS State: Aff - Purified State: Liquid purified Ig fraction Preservative: 0.09% Sodium Azide
Concentration:	lot specific
Purification:	Affinity Chromatography on Protein A
Conjugation:	Unconjugated
Storage:	Store undiluted at 2-8°C for one month or (in aliquots) at -20°C for longer. Avoid repeated freezing and thawing.
Stability:	Shelf life: one year from despatch.
Gene Name:	sushi repeat containing protein, X-linked
Database Link:	Entrez Gene 8406 Human P78539
Background:	SRPX may be involved in phagocytosis during disk shedding, cell adhesion to cells other than the pigment epithelium or signal transduction.
Synonyms:	DRS; ETX1; SRPX1



[View online »](#)

Note: **Molecular Weight:** 51572 Da

Product images:



Western blot analysis of SRPX / ETX1 Antibody (Center) in 293 cell line lysates (35ug/lane). This demonstrates the SRPX antibody detected the SRPX protein (arrow).