

Product datasheet for **AP54047PU-N**

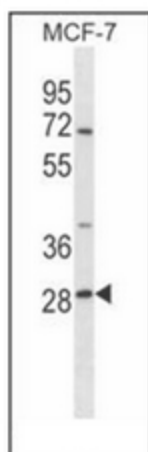
SRPR beta (SRPRB) (C-term) Rabbit Polyclonal Antibody

Product data:

Product Type:	Primary Antibodies
Applications:	WB
Recommended Dilution:	ELISA: 1/1000. Western Blot: 1/100-1/500.
Reactivity:	Human
Host:	Rabbit
Isotype:	Ig
Clonality:	Polyclonal
Immunogen:	KLH conjugated synthetic peptide between 206-236 amino acids from the C-terminal region of Human SRPRB.
Specificity:	This antibody recognizes Human SR-beta (C-term).
Formulation:	PBS State: Aff - Purified State: Liquid purified Ig fraction Preservative: 0.09% Sodium Azide
Concentration:	lot specific
Purification:	Affinity Chromatography on Protein A
Conjugation:	Unconjugated
Storage:	Store undiluted at 2-8°C for one month or (in aliquots) at -20°C for longer. Avoid repeated freezing and thawing.
Stability:	Shelf life: one year from despatch.
Gene Name:	SRP receptor beta subunit
Database Link:	Entrez Gene 58477 Human Q9Y5M8
Synonyms:	Signal recognition particle receptor subunit beta, SR beta, SRPRB, PSEC0230, APMCF1
Note:	Molecular Weight: 29702 Da
Protein Families:	Druggable Genome, Transmembrane



[View online »](#)

Product images:

Western blot analysis of SRPRB Antibody (C-term) in MCF-7 cell line lysates (35ug/lane). This demonstrates the SRPRB antibody detected the SRPRB protein (arrow).