

## Product datasheet for **AP54041PU-N**

### Cortactin (CTTN) (N-term) Rabbit Polyclonal Antibody

#### Product data:

Product Type:	Primary Antibodies
Applications:	IHC, WB
Recommended Dilution:	<b>Immunohistochemistry on Paraffin sections:</b> 1/50-1/100. <b>Western blot:</b> 1/100-1/500. Enzyme immunoassay: 1/1000.
Reactivity:	Human
Host:	Rabbit
Isotype:	Ig
Clonality:	Polyclonal
Immunogen:	Synthetic peptide - KLH conjugated - corresponding to the N-terminal region (between 16-46aa) of human Cortactin (SRC8)
Specificity:	This antibody recognizes Cortactin (SRC8) at N-term.
Formulation:	PBS with 0.09% (W/V) Sodium azide State: Aff - Purified State: Liquid purified Ig fraction
Concentration:	lot specific
Purification:	Purified through a Protein A column followed by peptide affinity purification
Conjugation:	Unconjugated
Storage:	Store undiluted at 2-8°C for one month or (in aliquots) at -20°C for longer. Avoid repeated freezing and thawing.
Stability:	Shelf life: one year from despatch.
Gene Name:	cortactin
Database Link:	<a href="#">Entrez Gene 2017 Human Q14247</a>



[View online »](#)

**Background:**

SRC8 (CTTN) is overexpressed in breast cancer and squamous cell carcinomas of the head and neck. The encoded protein is localized in the cytoplasm and in areas of the cell-substratum contacts. This protein has two roles: (1) regulating the interactions between components of adherens-type junctions and (2) organizing the cytoskeleton and cell adhesion structures of epithelia and carcinoma cells. During apoptosis, the encoded protein is degraded in a caspase-dependent manner. The aberrant regulation of this protein contributes to tumor cell invasion and metastasis.

**Synonyms:**

CTTN, EMS1, Amplxin, Oncogene EMS1

**Note:**

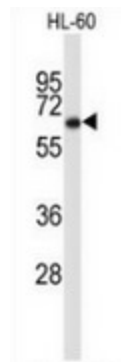
**Molecular Weight:** 61586 Da

**Protein Families:**

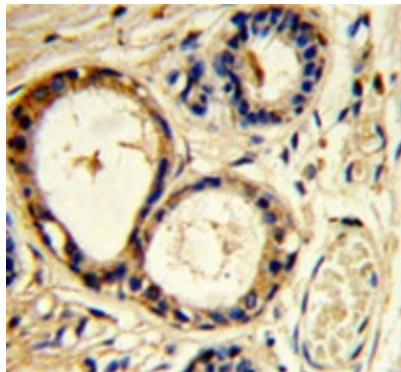
Druggable Genome

**Protein Pathways:**

Pathogenic Escherichia coli infection, Tight junction

**Product images:**


Western blot analysis of Cortactin (arrow) in HL-60 cell line lysates (35ug/lane) using Cortactin (SRC8) antibody. (N-term).



Immunohistochemistry analysis of human breast carcinoma (Formalin-fixed, Paraffin-embedded) using Cortactin (SRC8) antibody. (N-term), followed by peroxidase-conjugated secondary antibody and DAB staining. This data demonstrates the use of this antibody for IHC; Clinical relevance has not been evaluated.