

## Product datasheet for **AP54039PU-N**

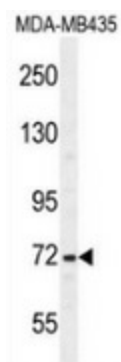
### SRBD1 (C-term) Rabbit Polyclonal Antibody

#### Product data:

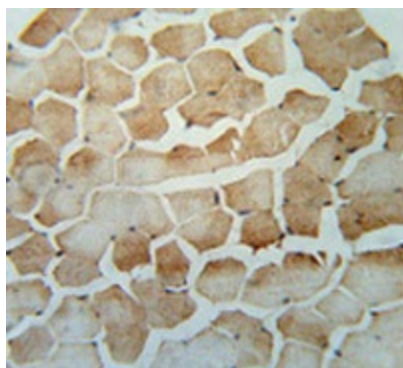
Product Type:	Primary Antibodies
Applications:	IHC, WB
Recommended Dilution:	<b>Immunohistochemistry on Paraffin sections:</b> 1/50-1/100. <b>Western blot:</b> 1/100-1/500. Enzyme immunoassay: 1/1000.
Reactivity:	Human
Host:	Rabbit
Isotype:	Ig
Clonality:	Polyclonal
Immunogen:	Synthetic peptide - KLH conjugated - corresponding to the C-terminal region (between 934-963aa) of human SRBD1
Specificity:	This antibody recognizes SRBD1 at C-term.
Formulation:	PBS with 0.09% (W/V) Sodium azide State: Aff - Purified State: Liquid purified Ig fraction
Concentration:	lot specific
Purification:	Purified through a Protein A column followed by peptide affinity purification
Conjugation:	Unconjugated
Storage:	Store undiluted at 2-8°C for one month or (in aliquots) at -20°C for longer. Avoid repeated freezing and thawing.
Stability:	Shelf life: one year from despatch.
Gene Name:	S1 RNA binding domain 1
Database Link:	<a href="#">Entrez Gene 55133 Human</a> <a href="#">Q8N5C6</a>
Synonyms:	FLJ10379
Note:	<b>Molecular Weight:</b> 111776 Da; Isoform 69KD Da



[View online »](#)

**Product images:**

Western blot analysis in MDA-MB435 cell line lysates (35ug/lane) using SRBD1 antibody. (C-term). This demonstrates the SRBD1 antibody detected the SRBD1 protein (arrow).



Immunohistochemistry analysis in human skeletal muscle (Formalin-fixed, Paraffin-embedded) using SRBD1 antibody. (C-term), followed by peroxidase conjugation of the secondary antibody and DAB staining. This data demonstrates the use of the SRBD1 aAntibody for IHC; Clinical relevance has not been evaluated.