

## Product datasheet for **AP54038PU-N**

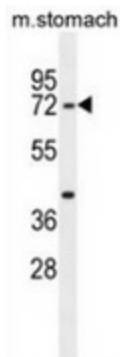
### **SERAC1 (C-term) Rabbit Polyclonal Antibody**

#### **Product data:**

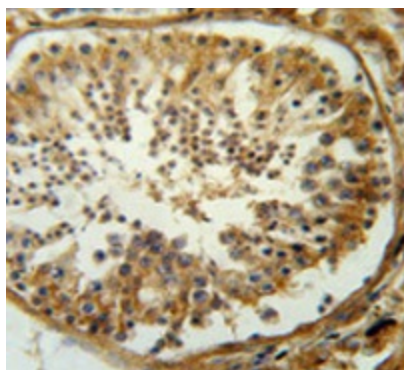
Product Type:	Primary Antibodies
Applications:	IHC, WB
Recommended Dilution:	<b>Immunohistochemistry on Paraffin sections:</b> 1/50-1/100. <b>Western blot:</b> 1/100-1/500. Enzyme immunoassay: 1/1000.
Reactivity:	Human, Mouse
Host:	Rabbit
Isotype:	Ig
Clonality:	Polyclonal
Immunogen:	Synthetic peptide - KLH conjugated - corresponding to the C-terminal region (between 555-585aa) of human SERAC1.
Specificity:	This antibody recognizes SERAC1 at C-term.
Formulation:	PBS with 0.09% (W/V) Sodium azide State: Aff - Purified State: Liquid purified Ig fraction
Concentration:	lot specific
Purification:	Purified through a Protein A column followed by peptide affinity purification
Conjugation:	Unconjugated
Storage:	Store undiluted at 2-8°C for one month or (in aliquots) at -20°C for longer. Avoid repeated freezing and thawing.
Stability:	Shelf life: one year from despatch.
Gene Name:	serine active site containing 1
Database Link:	<a href="#">Entrez Gene 321007 Mouse</a> <a href="#">Entrez Gene 84947 Human</a> <a href="#">Q96JX3</a>
Synonyms:	FLJ14917; FLJ30544
Note:	<b>Molecular Weight:</b> 74147 Da



[View online »](#)

**Product images:**

Western blot analysis in mouse stomach tissue lysates (35ug/lane) using SERAC1 antibody. (C-term). This demonstrates the SERAC1 antibody detected the SERAC1 protein (arrow).



Immunohistochemistry analysis in human testis carcinoma (Formalin-fixed, Paraffin-embedded) using SERAC1 antibody. (C-term), followed by peroxidase conjugation of the secondary antibody and DAB staining. This data demonstrates the use of the SERAC1 antibody for IHC; Clinical relevance has not been evaluated.