

## Product datasheet for **AP54037PU-N**

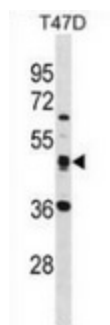
### SQOR (Center) Rabbit Polyclonal Antibody

#### Product data:

Product Type:	Primary Antibodies
Applications:	WB
Recommended Dilution:	<b>Western blot:</b> 1/1000.
Reactivity:	Human
Host:	Rabbit
Isotype:	Ig
Clonality:	Polyclonal
Immunogen:	Synthetic peptide - KLH conjugated - corresponding to the central region (between 196-224aa) of human SQRDL.
Specificity:	This antibody recognizes SQRDL.
Formulation:	PBS with 0.09% (W/V) Sodium azide State: Aff - Purified State: Liquid purified Ig fraction
Concentration:	lot specific
Purification:	Purified through a Protein A column followed by peptide affinity purification
Conjugation:	Unconjugated
Storage:	Store undiluted at 2-8°C for one month or (in aliquots) at -20°C for longer. Avoid repeated freezing and thawing.
Stability:	Shelf life: one year from despatch.
Gene Name:	sulfide quinone reductase-like (yeast)
Database Link:	<a href="#">Entrez Gene 58472 Human Q9Y6N5</a>
Background:	SQRDL catalyzes the oxidation of hydrogen sulfide, with the help of a quinone (By similarity).
Synonyms:	Sulfide quinone oxidoreductase mitochondrial, CGI-44
Note:	<b>Molecular Weight:</b> 49961 Da
Protein Families:	Druggable Genome



[View online »](#)

**Product images:**

Western blot analysis in T47D cell line lysates (35ug/lane) using SQRD antibody. This demonstrates the SQRD antibody detected the SQRD protein (arrow).