

Product datasheet for **AP54036PU-N**

Squalene Epoxidase (SQLE) (N-term) Rabbit Polyclonal Antibody

Product data:

Product Type:	Primary Antibodies
Applications:	IHC, WB
Recommended Dilution:	Immunohistochemistry on Paraffin sections: 1/10-1/50. Western blot: 1/100-1/500. Enzyme immunoassay: 1/1000.
Reactivity:	Human
Host:	Rabbit
Isotype:	Ig
Clonality:	Polyclonal
Immunogen:	Synthetic peptide - KLH conjugated - corresponding to the N-terminal region (between 67-97aa) of human Squalene epoxidase / SQLE
Specificity:	This antibody recognizes Squalene epoxidase / SQLE at N-term.
Formulation:	PBS with 0.09% (W/V) Sodium azide State: Aff - Purified State: Liquid purified Ig fraction
Concentration:	lot specific
Purification:	Purified through a Protein A column followed by peptide affinity purification
Conjugation:	Unconjugated
Storage:	Store undiluted at 2-8°C for one month or (in aliquots) at -20°C for longer. Avoid repeated freezing and thawing.
Stability:	Shelf life: one year from despatch.
Gene Name:	squalene epoxidase
Database Link:	Entrez Gene 6713 Human Q14534
Background:	Squalene epoxidase catalyzes the first oxygenation step in sterol biosynthesis and is thought to be one of the rate-limiting enzymes in this pathway.
Synonyms:	Squalene monooxygenase, ERG1



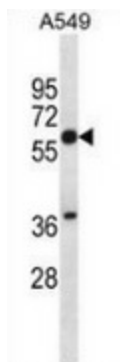
[View online »](#)

Note: **Molecular Weight:** 63923 Da

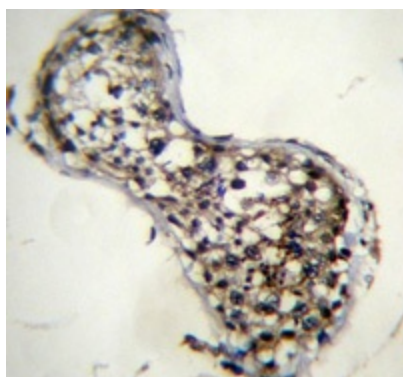
Protein Families: Druggable Genome, Transmembrane

Protein Pathways: Metabolic pathways, Steroid biosynthesis

Product images:



Western blot analysis in A549 cell line lysates (35ug/lane) using Squalene epoxidase / SQLE antibody. (N-term). This demonstrates the SQLE antibody detected the SQLE protein (arrow).



Immunohistochemistry analysis in human testis tissue (Formalin-fixed, Paraffin-embedded) using Squalene epoxidase / SQLE antibody. (N-term), followed by peroxidase conjugation of the secondary antibody and DAB staining. This data demonstrates the use of SQLE antibody for IHC; Clinical relevance has not been evaluated.