

## Product datasheet for **AP54035PU-N**

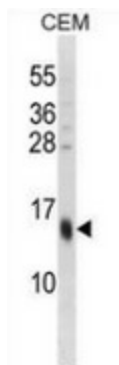
### SPRR3 (C-term) Rabbit Polyclonal Antibody

#### Product data:

Product Type:	Primary Antibodies
Applications:	WB
Recommended Dilution:	<b>Western blot:</b> 1/100-1/500. Enzyme immunoassay: 1/1000.
Reactivity:	Human
Host:	Rabbit
Isotype:	Ig
Clonality:	Polyclonal
Immunogen:	Synthetic peptide - KLH conjugated - corresponding to the C-terminal region (between 100-129aa) of human SPRR3 / Cornifin beta
Specificity:	This antibody recognizes SPRR3 / Cornifin beta at C-term.
Formulation:	PBS with 0.09% (W/V) Sodium azide State: Aff - Purified State: Liquid purified Ig fraction
Concentration:	lot specific
Purification:	Purified through a Protein A column followed by peptide affinity purification
Conjugation:	Unconjugated
Storage:	Store undiluted at 2-8°C for one month or (in aliquots) at -20°C for longer. Avoid repeated freezing and thawing.
Stability:	Shelf life: one year from despatch.
Gene Name:	small proline rich protein 3
Database Link:	<a href="#">Entrez Gene 6707 Human Q9UBC9</a>
Background:	SPRR3 is a cross-linked envelope protein of keratinocytes.
Synonyms:	SPRC, Esophagin
Note:	<b>Molecular Weight:</b> 18154 Da



[View online »](#)

**Product images:**

Western blot analysis in CEM cell line lysates (35ug/lane) using SPRR3 / Cornifin beta antibody. (C-term). This demonstrates the SPRR3 antibody detected the SPRR3 protein (arrow).