

Product datasheet for **AP54033PU-N**

SPRR1B (C-term) Rabbit Polyclonal Antibody

Product data:

Product Type:	Primary Antibodies
Applications:	IHC, WB
Recommended Dilution:	Immunohistochemistry on Paraffin sections: 1/50-1/100. Western blot: 1/1000. Enzyme immunoassay: 1/1000.
Reactivity:	Human
Host:	Rabbit
Isotype:	Ig
Clonality:	Polyclonal
Immunogen:	Synthetic peptide - KLH conjugated - corresponding to the C-terminal region (between 63-89aa) of human SPRR1B / Cornifin-B
Specificity:	This antibody recognizes SPRR1B / Cornifin-B at C-term.
Formulation:	PBS with 0.09% (W/V) Sodium azide State: Aff - Purified State: Liquid purified Ig fraction
Concentration:	lot specific
Purification:	Purified through a Protein A column followed by peptide affinity purification
Conjugation:	Unconjugated
Storage:	Store undiluted at 2-8°C for one month or (in aliquots) at -20°C for longer. Avoid repeated freezing and thawing.
Stability:	Shelf life: one year from despatch.
Gene Name:	small proline rich protein 1B
Database Link:	Entrez Gene 6699 Human P22528
Background:	SPRR1B/Cornifin-B is a keratinocyte protein that first appears in the cell cytosol, but ultimately becomes cross-linked to membrane proteins by transglutaminase. All that results in the formation of an insoluble envelope beneath the plasma membrane. Cornifin-B can function as both amine donor and acceptor in transglutaminase-mediated cross-linkage.

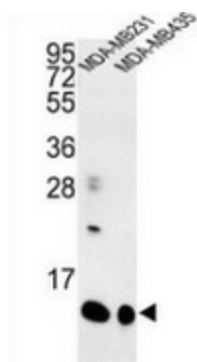


[View online »](#)

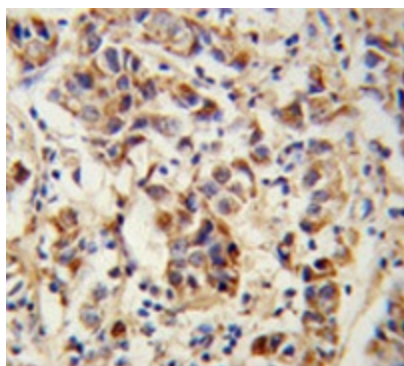
Synonyms: SPR-IB

Note: **Molecular Weight:** 9888 Da

Product images:



Western blot analysis of Cornifin-B (arrow) in MDA-MB231, MDA-MB435 cell line lysates (35ug/lane) using SPRR1B / Cornifin-B antibody. (C-term).



Immunohistochemistry analysis of human breast carcinoma (Formalin-fixed, Paraffin-embedded) using SPRR1B / Cornifin-B antibody. (C-term), followed by peroxidase-conjugated secondary antibody and DAB staining. This data demonstrates the use of this antibody for IHC; Clinical relevance has not been evaluated.