

Product datasheet for **AP54032PU-N**

SPRR1A (C-term) Rabbit Polyclonal Antibody

Product data:

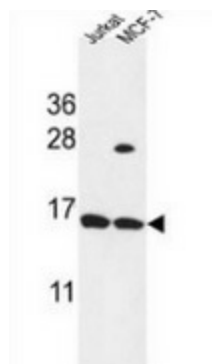
Product Type:	Primary Antibodies
Applications:	WB
Recommended Dilution:	Western blot: 1/100-1/500. Enzyme immunoassay: 1/1000.
Reactivity:	Human
Host:	Rabbit
Isotype:	Ig
Clonality:	Polyclonal
Immunogen:	Synthetic peptide - KLH conjugated - corresponding to the C-terminal region (between 60-89aa) of human SPRR1A / Cornifin-A
Specificity:	This antibody recognizes SPRR1A / Cornifin-A at C-term.
Formulation:	PBS with 0.09% (W/V) Sodium azide State: Aff - Purified State: Liquid purified Ig fraction
Concentration:	lot specific
Purification:	Purified through a Protein A column followed by peptide affinity purification
Conjugation:	Unconjugated
Storage:	Store undiluted at 2-8°C for one month or (in aliquots) at -20°C for longer. Avoid repeated freezing and thawing.
Stability:	Shelf life: one year from despatch.
Gene Name:	small proline rich protein 1A
Database Link:	Entrez Gene 6698 Human P35321
Background:	The SPRR1A gene encodes a cross-linked envelope protein of keratinocytes. It is a keratinocyte protein that first appears in the cell cytosol, but ultimately becomes cross-linked to membrane proteins by transglutaminase. All that results in the formation of an insoluble envelope beneath the plasma membrane.
Synonyms:	SPR-IA, SPRK



[View online »](#)

Note: **Molecular Weight:** 9877 Da

Product images:



Western blot analysis in Jurkat, MCF-7 cell line lysates (35ug/lane) using SPRR1A / Cornifin-A antibody. (C-term). This demonstrates the Cornifin-A antibody detected the Cornifin-A protein (arrow).