

## Product datasheet for **AP54031PU-N**

### SPRED3 (N-term) Rabbit Polyclonal Antibody

#### Product data:

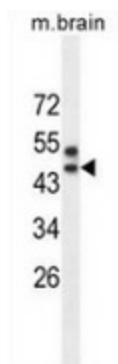
Product Type:	Primary Antibodies
Applications:	IHC, WB
Recommended Dilution:	<b>Immunohistochemistry on Paraffin sections:</b> 1/50-1/100. <b>Western blot:</b> 1/100-1/500. Enzyme immunoassay: 1/1000.
Reactivity:	Human, Mouse
Host:	Rabbit
Isotype:	Ig
Clonality:	Polyclonal
Immunogen:	Synthetic peptide - KLH conjugated - corresponding to the N-terminal region ( between 37-67aa) of human SPRED3.
Specificity:	This antibody recognizes SPRED3 at N-term.
Formulation:	PBS with 0.09% (W/V) Sodium azide State: Aff - Purified State: Liquid purified Ig fraction
Concentration:	lot specific
Purification:	Purified through a Protein A column followed by peptide affinity purification
Conjugation:	Unconjugated
Storage:	Store undiluted at 2-8°C for one month or (in aliquots) at -20°C for longer. Avoid repeated freezing and thawing.
Stability:	Shelf life: one year from despatch.
Gene Name:	sprouty related EVH1 domain containing 3
Database Link:	<a href="#">Entrez Gene 399473 Human Q2MJR0</a>
Background:	SPRED3 is a member of the Sprouty (see SPRY1; MIM 602465)/SPRED family of proteins that regulate growth factor-induced activation of the MAP kinase cascade [ <i>Nonami et al., 2004; PubMed 15465815</i> ].
Synonyms:	EVE-3



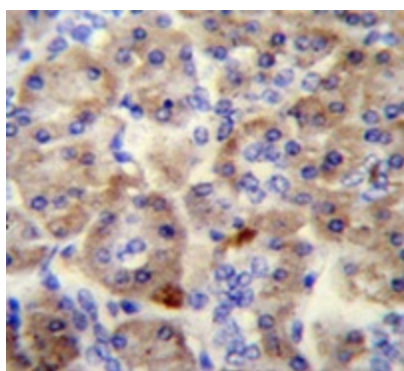
[View online »](#)

Note: **Molecular Weight:** 42670 Da

### Product images:



Western blot analysis in mouse brain tissue lysates (35ug/lane) using SPRED3 antibody. (N-term). This demonstrates the SPRED3 antibody detected the SPRED3 protein (arrow).



Immunohistochemistry analysis in human pancreas tissue (Formalin-fixed, Paraffin-embedded) using SPRED3 antibody. (N-term), followed by peroxidase conjugation of the secondary antibody and DAB staining. This data demonstrates the use of the SPRED3 antibody for IHC. Clinical relevance has not been evaluated.