

## Product datasheet for **AP54029PU-N**

### SPOPL (Center) Rabbit Polyclonal Antibody

#### Product data:

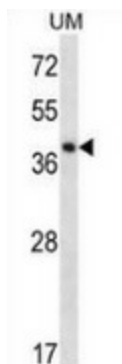
Product Type:	Primary Antibodies
Applications:	IHC, WB
Recommended Dilution:	<b>Immunohistochemistry on Paraffin sections:</b> 1/10-1/50. <b>Western blot:</b> 1/100-1/500. Enzyme immunoassay: 1/1000.
Reactivity:	Human
Host:	Rabbit
Isotype:	Ig
Clonality:	Polyclonal
Immunogen:	Synthetic peptide - KLH conjugated - corresponding to the central region (between 228-357aa) of human SPOPL.
Specificity:	This antibody recognizes SPOPL.
Formulation:	PBS with 0.09% (W/V) Sodium azide State: Aff - Purified State: Liquid purified Ig fraction
Concentration:	lot specific
Purification:	Purified through a Protein A column followed by peptide affinity purification
Conjugation:	Unconjugated
Storage:	Store undiluted at 2-8°C for one month or (in aliquots) at -20°C for longer. Avoid repeated freezing and thawing.
Stability:	Shelf life: one year from despatch.
Gene Name:	speckle type BTB/POZ protein like
Database Link:	<a href="#">Entrez Gene 339745 Human</a> <a href="#">Q6IQ16</a>
Background:	In complex with a cullin, may act in ubiquitination and proteasomal degradation processes (By similarity).
Synonyms:	Speckle-type POZ protein-like, HIB homolog 2, Roadkill homolog 2



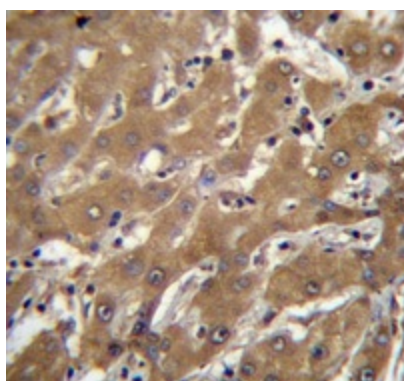
[View online »](#)

Note: **Molecular Weight:** 44647 Da

**Product images:**



Western blot analysis in UM cell line lysates (35ug/lane) using SPOPL antibody. This demonstrates the SPOPL antibody detected the SPOPL protein (arrow).



Immunohistochemistry analysis in human liver tissue (Formalin-fixed, Paraffin-embedded) using SPOPL antibody., followed by peroxidase conjugation of the secondary antibody and DAB staining. This data demonstrates the use of SPOPL antibody for IHC; Clinical relevance has not been evaluated.