

## Product datasheet for **AP54027PU-N**

### SPNS3 (C-term) Rabbit Polyclonal Antibody

#### Product data:

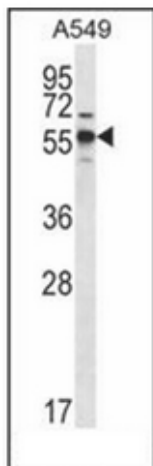
Product Type:	Primary Antibodies
Applications:	IHC, WB
Recommended Dilution:	<b>ELISA:</b> 1/1000. <b>Western Blot:</b> 1/100-1/500. <b>Immunohistochemistry on Paraffin Sections:</b> 1/10-1/50.
Reactivity:	Human
Host:	Rabbit
Isotype:	Ig
Clonality:	Polyclonal
Immunogen:	KLH conjugated synthetic peptide between 477-506 amino acids from the C-terminal region of Human SPNS3
Specificity:	This antibody recognizes Human SPNS3 (C-term).
Formulation:	PBS State: Aff - Purified State: Liquid purified Ig fraction Preservative: 0.09% Sodium Azide
Concentration:	lot specific
Purification:	Affinity Chromatography on Protein A
Conjugation:	Unconjugated
Storage:	Store undiluted at 2-8°C for one month or (in aliquots) at -20°C for longer. Avoid repeated freezing and thawing.
Stability:	Shelf life: one year from despatch.
Gene Name:	sphingolipid transporter 3 (putative)
Database Link:	<a href="#">Entrez Gene 201305 Human</a> <a href="#">Q6ZMD2</a>
Synonyms:	Protein spinster homolog 3
Note:	<b>Molecular Weight:</b> 54769 Da



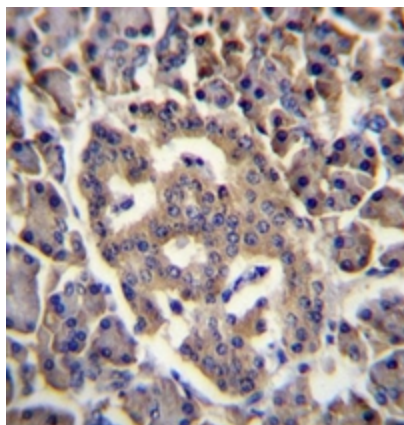
[View online »](#)

Protein Families: Transmembrane

### Product images:



Western blot analysis of SPNS3 Antibody (C-term) in A549 cell line lysates (35ug/lane). This demonstrates the SPNS3 antibody detected the SPNS3 protein (arrow).



Formalin fixed, paraffin embedded human pancreas tissue stained with SPNS3 Antibody (C-term) followed by peroxidase conjugation of the secondary antibody and DAB staining. This data demonstrates the use of SPNS3 Antibody (C-term) for immunohistochemistry. Clinical relevance has not been evaluated.