

## Product datasheet for **AP54026PU-N**

### LOC105369261 (Center) Rabbit Polyclonal Antibody

#### Product data:

Product Type:	Primary Antibodies
Applications:	WB
Recommended Dilution:	<b>ELISA:</b> 1/1000. <b>Western blot:</b> 1/100 - 1/500.
Reactivity:	Human
Host:	Rabbit
Isotype:	Ig
Clonality:	Polyclonal
Immunogen:	KLH conjugated synthetic peptide between 232~262 amino acids from the Central region of human SPN.
Specificity:	This antibody reacts to SPN.
Formulation:	PBS State: Aff - Purified State: Liquid purified Ig fraction Preservative: 0.09% (W/V) Sodium azide
Concentration:	lot specific
Purification:	Affinity chromatography on Protein A
Conjugation:	Unconjugated
Storage:	Store undiluted at 2-8°C for one month or (in aliquots) at -20°C for longer. Avoid repeated freezing and thawing.
Stability:	Shelf life: one year from despatch.
Predicted Protein Size:	40322 Da
Database Link:	<a href="#">Entrez Gene 6693 Human</a> <a href="#">Entrez Gene 105369261 Human P16150</a>
Background:	Sialophorin (leukosialin) is a major sialoglycoprotein on the surface of human T lymphocytes, monocytes, granulocytes, and some B lymphocytes, which appears to be important for immune function and may be part of a physiologic ligand-receptor complex involved in T-cell activation.



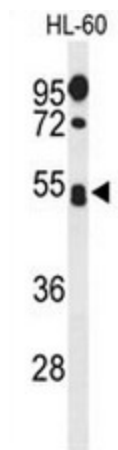
[View online »](#)

**Synonyms:** Leukocyte sialoglycoprotein, Sialophorin, Galactoglycoprotein, SPN

**Protein Families:** Druggable Genome, ES Cell Differentiation/IPS, Transmembrane

**Protein Pathways:** Cell adhesion molecules (CAMs)

**Product images:**



Western blot analysis of SPN Antibody (Center) in HL-60 cell line lysates (35ug/lane). SPN (arrow) was detected using the purified Pab.