

Product datasheet for **AP54024PU-N**

SPIRE2 (Center) Rabbit Polyclonal Antibody

Product data:

Product Type:	Primary Antibodies
Applications:	WB
Recommended Dilution:	ELISA: 1/1000 (Peptide ELISA). Western blotting: 1/1000.
Reactivity:	Human, Mouse
Host:	Rabbit
Isotype:	Ig
Clonality:	Polyclonal
Immunogen:	KLH conjugated synthetic peptide between 285-313 amino acids from the Central region of Human SPIRE2.
Specificity:	This antibody recognizes SPIRE2 (Center).
Formulation:	PBS State: Aff - Purified State: Liquid purified IgG fraction Preservative: 0.09% (W/V) Sodium Azide
Concentration:	lot specific
Purification:	Affinity Chromatography on Protein A
Conjugation:	Unconjugated
Storage:	Store undiluted at 2-8°C for one month or (in aliquots) at -20°C for longer. Avoid repeated freezing and thawing.
Stability:	Shelf life: one year from despatch.
Gene Name:	spire type actin nucleation factor 2
Database Link:	Entrez Gene 234857 Mouse Entrez Gene 84501 Human Q8WWL2
Background:	Acts as a actin nucleation factor, remains associated with the slow-growing pointed end of the new filament. Involved in vesicle transport processes providing a novel link between actin organization and intracellular transport (By similarity).
Synonyms:	Protein spire homolog 2, SPIR2, Spir-2, KIAA1832

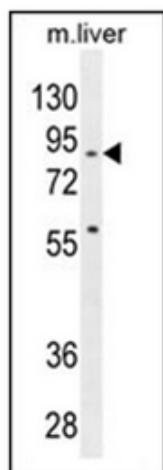


[View online »](#)

Note: **Molecular Weight:** 79671 Da

Protein Pathways: Dorso-ventral axis formation

Product images:



Western blot analysis in mouse liver tissue lysates (35 ug/lane) using SPIRE2 antibody (Center). This demonstrates the SPIRE2 antibody detected the SPIRE2 protein (arrow).