

Product datasheet for **AP54023PU-N**

SPINT1 (Center) Rabbit Polyclonal Antibody

Product data:

Product Type:	Primary Antibodies
Applications:	WB
Recommended Dilution:	Peptide ELISA: 1/1000. Western blot: 1/1000.
Reactivity:	Human
Host:	Rabbit
Isotype:	Ig
Clonality:	Polyclonal
Immunogen:	KLH conjugated synthetic peptide between 178-207 amino acids from the Central region of human SPINT
Specificity:	This antibody reacts to SPINT1.
Formulation:	PBS State: Aff - Purified State: Liquid purified Ig fraction Preservative: 0.09% (W/V) Sodium azide
Concentration:	lot specific
Purification:	Affinity chromatography on Protein A
Conjugation:	Unconjugated
Storage:	Store undiluted at 2-8°C for one month or (in aliquots) at -20°C for longer. Avoid repeated freezing and thawing.
Stability:	Shelf life: one year from despatch.
Predicted Protein Size:	58398 Da
Gene Name:	serine peptidase inhibitor, Kunitz type 1
Database Link:	Entrez Gene 6692 Human O43278



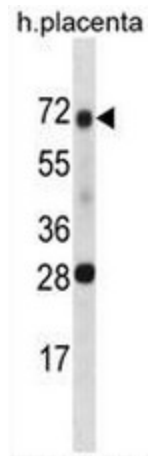
[View online »](#)

Background: The protein encoded by this gene is a member of the Kunitz family of serine protease inhibitors. The protein is a potent inhibitor specific for HGF activator and is thought to be involved in the regulation of the proteolytic activation of HGF in injured tissues. Alternative splicing results in multiple variants encoding different isoforms.

Synonyms: HAI-1, MANSC2, Kunitz-type protease inhibitor 1

Protein Families: Druggable Genome, Secreted Protein, Transmembrane

Product images:



SPINT1 Antibody (Center) western blot analysis in human placenta tissue lysates (35ug/lane). This demonstrates the SPINT1 antibody detected the SPINT1 protein (arrow).