

Product datasheet for **AP54022PU-N**

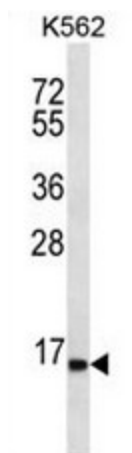
SPINK8 (C-term) Rabbit Polyclonal Antibody

Product data:

Product Type:	Primary Antibodies
Applications:	WB
Recommended Dilution:	ELISA: 1/1000. Western blot: 1/100 - 1/500.
Reactivity:	Human
Host:	Rabbit
Isotype:	Ig
Clonality:	Polyclonal
Immunogen:	KLH conjugated synthetic peptide between 62-91 amino acids from the C-terminal region of human SPINK8
Specificity:	This antibody reacts to SPINK8.
Formulation:	PBS State: Aff - Purified State: Liquid purified Ig fraction Preservative: 0.09% (W/V) Sodium azide
Concentration:	lot specific
Purification:	Affinity chromatography on Protein A
Conjugation:	Unconjugated
Storage:	Store undiluted at 2-8°C for one month or (in aliquots) at -20°C for longer. Avoid repeated freezing and thawing.
Stability:	Shelf life: one year from despatch.
Predicted Protein Size:	10821 Da
Gene Name:	serine peptidase inhibitor, Kazal type 8 (putative)
Database Link:	Entrez Gene 646424 Human POC7L1
Background:	SPINK8 is probable serine protease inhibitor (By similarity).
Synonyms:	Serine protease inhibitor Kazal-type 8



[View online »](#)

Product images:

SPINK8 Antibody (C-term) western blot analysis in K562 cell line lysates (35ug/lane). This demonstrates the SPINK8 antibody detected the SPINK8 protein (arrow).