

Product datasheet for **AP54016PU-N**

SPART (N-term) Rabbit Polyclonal Antibody

Product data:

Product Type:	Primary Antibodies
Applications:	FC, IHC, WB
Recommended Dilution:	Flow cytometry: 1/10-1/50. Immunohistochemistry on Paraffin sections: 1/50-1/100. Western blot: 1/100-1/500. Enzyme immunoassay: 1/1000.
Reactivity:	Human
Host:	Rabbit
Isotype:	Ig
Clonality:	Polyclonal
Immunogen:	Synthetic peptide - KLH conjugated - corresponding to the N-terminal region (between 24-54aa) of human Spartin / SPG20
Specificity:	This antibody recognizes Spartin / SPG20 at N-term.
Formulation:	PBS with 0.09% (W/V) Sodium azide State: Aff - Purified State: Liquid purified Ig fraction
Concentration:	lot specific
Purification:	Purified through a Protein A column followed by peptide affinity purification
Conjugation:	Unconjugated
Storage:	Store undiluted at 2-8°C for one month or (in aliquots) at -20°C for longer. Avoid repeated freezing and thawing.
Stability:	Shelf life: one year from despatch.
Gene Name:	spastic paraplegia 20 (Troyer syndrome)
Database Link:	Entrez Gene 23111 Human Q8N0X7



[View online »](#)

Background:

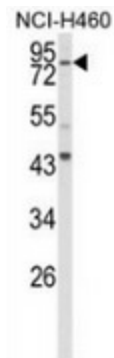
Spartin / SPG20 is a protein containing a MIT (Microtubule Interacting and Trafficking molecule) domain, and is implicated in regulating endosomal trafficking and mitochondria function. The protein localizes to mitochondria and partially co-localizes with microtubules. Stimulation with epidermal growth factor (EGF) results in protein translocation to the plasma membrane, and the protein functions in the degradation and intracellular trafficking of EGF receptor.

Synonyms:

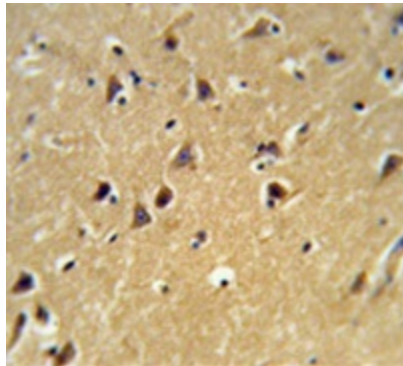
KIAA0610, TAHCCP1

Note:

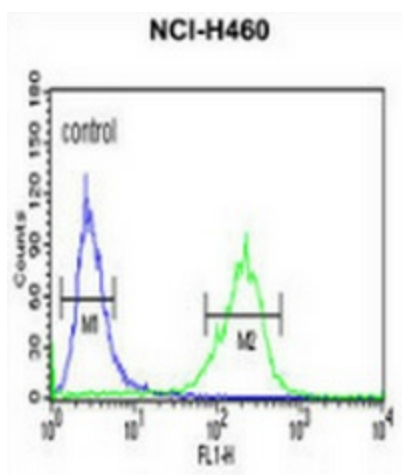
Molecular Weight: 72833 Da

Product images:

Western blot analysis of Spartin (arrow) in NCI-H460 cell line lysates (35ug/lane) using Spartin / SPG20 antibody. (N-term).



Immunohistochemistry analysis of human brain tissue (Formalin-fixed, Paraffin-embedded) using Spartin / SPG20 antibody. (N-term), followed by peroxidase-conjugated secondary antibody and DAB staining. This data demonstrates the use of this antibody for IHC; clinical relevance has not been evaluated.



Flow cytometric analysis of NCI-H460 cells (right histogram) compared to a negative control cell (left histogram) using Spartin / SPG20 antibody. (N-term), followed by FITC-conjugated goat-anti-rabbit secondary antibodies.