

Product datasheet for **AP54015PU-N**

SPART (C-term) Rabbit Polyclonal Antibody

Product data:

Product Type:	Primary Antibodies
Applications:	WB
Recommended Dilution:	ELISA: 1/1000. Western Blot: 1/100-1/500.
Reactivity:	Human
Host:	Rabbit
Isotype:	Ig
Clonality:	Polyclonal
Immunogen:	KLH conjugated synthetic peptide between 490-519 amino acids from the C-terminal region of Human SPG20
Specificity:	This antibody recognizes Human
Formulation:	PBS State: Aff - Purified State: Liquid purified Ig fraction Preservative: 0.09% Sodium Azide
Concentration:	lot specific
Purification:	Affinity Chromatography on Protein A
Conjugation:	Unconjugated
Storage:	Maintain refrigerated at 2-8°C for up to 6 months. For long term storage store at -20°C in small aliquots to prevent freeze-thaw cycles.
Gene Name:	spastic paraplegia 20 (Troyer syndrome)
Database Link:	Entrez Gene 23111 Human Q8N0X7



[View online »](#)

Background:

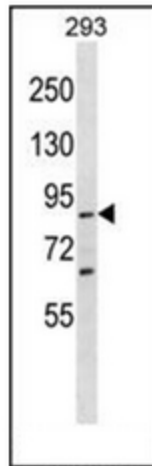
SPG20 is a protein containing a MIT (Microtubule Interacting and Trafficking molecule) domain, and is implicated in regulating endosomal trafficking and mitochondria function. The protein localizes to mitochondria and partially co-localizes with microtubules. Stimulation with epidermal growth factor (EGF) results in protein translocation to the plasma membrane, and the protein functions in the degradation and intracellular trafficking of EGF receptor. Multiple alternatively spliced variants, encoding the same protein, have been identified. Mutations associated with this gene cause autosomal recessive spastic paraplegia 20 (Troyer syndrome)

Synonyms:

KIAA0610, TAHCCP1

Note:

Molecular Weight: 72833 Da

Product images:

Western blot analysis of Spartin / SPG20 Antibody (C-term) in 293 cell line lysates (35ug/lane). This demonstrates the SPG20 antibody detected the SPG20 protein (arrow).