

## Product datasheet for **AP54014PU-N**

### **SPEM1 (Center) Rabbit Polyclonal Antibody**

#### **Product data:**

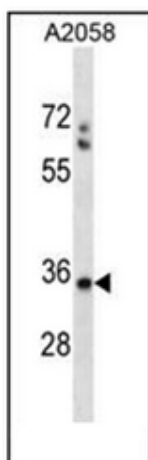
Product Type:	Primary Antibodies
Applications:	WB
Recommended Dilution:	<b>ELISA:</b> 1/1000. <b>Western Blot:</b> 1/100-1/500.
Reactivity:	Human
Host:	Rabbit
Isotype:	Ig
Clonality:	Polyclonal
Immunogen:	KLH conjugated synthetic peptide between 114-144 amino acids from the Central region of Human SPEM1
Specificity:	This antibody recognizes Human SPEM1 (center).
Formulation:	PBS State: Aff - Purified State: Liquid purified Ig fraction Preservative: 0.09% Sodium Azide
Concentration:	lot specific
Purification:	Affinity Chromatography on Protein A
Conjugation:	Unconjugated
Storage:	Store undiluted at 2-8°C for one month or (in aliquots) at -20°C for longer. Avoid repeated freezing and thawing.
Stability:	Shelf life: one year from despatch.
Gene Name:	spermatid maturation 1
Database Link:	<a href="#">Entrez Gene 374768 Human Q8N4L4</a>
Background:	SPEM1 is required for proper cytoplasm removal during spermatogenesis (By similarity).
Synonyms:	Spermatid maturation protein 1, C17orf83
Note:	<b>Molecular Weight:</b> 34773 Da



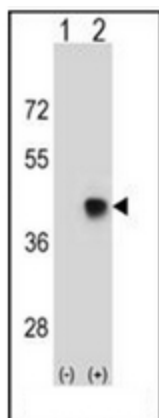
[View online »](#)

Protein Families: Transmembrane

### Product images:



Western blot analysis of SPEM1 Antibody (Center) in A2058 cell line lysates (35ug/lane). This demonstrates the SPEM1 antibody detected the SPEM1 protein (arrow).



Western blot analysis of SPEM1 (arrow) using SPEM1 Antibody (Center). 293 cell lysates (2 ug/lane) either nontransfected (Lane 1) or transiently transfected (Lane 2) with the SPEM1 gene.