

Product datasheet for **AP54013PU-N**

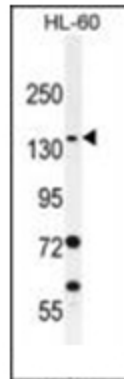
SPECC1L (Center) Rabbit Polyclonal Antibody

Product data:

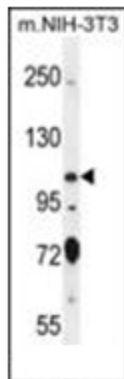
Product Type:	Primary Antibodies
Applications:	FC, IF, IHC, WB
Recommended Dilution:	Western Blot: 1/1000. Flow Cytometry: 1/10-1/50. Immunofluorescence: 1/10-1/50. Immunohistochemistry on Paraffin Sections: 1/10-1/50.
Reactivity:	Human, Mouse
Host:	Rabbit
Isotype:	Ig
Clonality:	Polyclonal
Immunogen:	KLH conjugated synthetic peptide between 705-733 amino acids from the central region of Human SPECC1-like protein.
Specificity:	This antibody recognizes Human and Mouse SPECC1L (Center).
Formulation:	PBS State: Aff - Purified State: Liquid purified Ig fraction Preservative: 0.09% Sodium Azide
Concentration:	lot specific
Purification:	Affinity Chromatography on Protein A
Conjugation:	Unconjugated
Storage:	Store undiluted at 2-8°C for one month or (in aliquots) at -20°C for longer. Avoid repeated freezing and thawing.
Stability:	Shelf life: one year from despatch.
Gene Name:	sperm antigen with calponin homology and coiled-coil domains 1-like
Database Link:	Entrez Gene 23384 Human Q69YQ0
Synonyms:	CYTSA,Cytospin-A,KIAA0376,NY-REN-22,SPECC1-like protein
Note:	Molecular Weight: 124602 Da



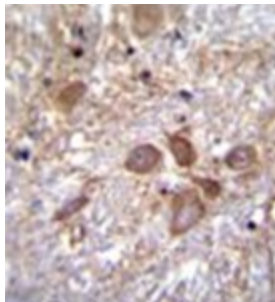
[View online »](#)

Product images:

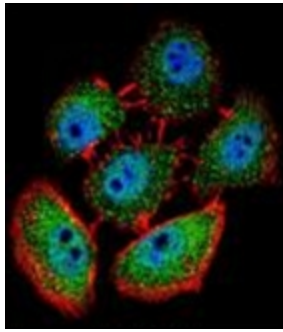
Western blot analysis of SPECC1 Antibody (Center) in HL-60 cell line lysates (35ug/lane). This demonstrates the SPECC1 antibody detected the SPECC1 protein (arrow).



Western blot analysis of SPECC1 Antibody (Center) in Mouse NIH-3T3 cell line lysates (35ug/lane). This demonstrates the SPECC1 antibody detected the SPECC1 protein (arrow).

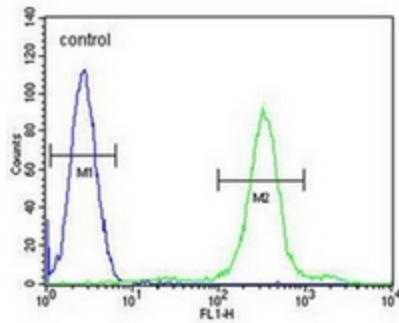


Formalin fixed, paraffin embedded human brain tissue stained with SPECC1 Antibody (Center) followed by peroxidase conjugation of the secondary antibody and DAB staining. This data demonstrates the use of SPECC1 Antibody (Center) for immunohistochemistry. Clinical relevance has not been evaluated.



Confocal immunofluorescent analysis of SPECC1 Antibody (Center) with U-251MG cell followed by Alexa Fluor 488-conjugated goat anti-rabbit IgG (green). Actin filaments have been labeled with Alexa Fluor 555 phalloidin (red). DAPI was used to stain the cell nuclear (blue).

HL-60



Flow cytometric analysis of HL-60 cells using SPECC1 Antibody (Center) (right histogram) compared to a negative control cell (left histogram). FITC-conjugated goat-anti-rabbit secondary antibodies were used for the analysis.