

Product datasheet for **AP54010PU-N**

SPDYE3 (Center) Rabbit Polyclonal Antibody

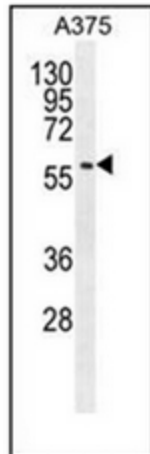
Product data:

| | |
|-----------------------|---|
| Product Type: | Primary Antibodies |
| Applications: | FC, IHC, WB |
| Recommended Dilution: | ELISA: 1/1000. Western Blot: 1/100-1/500. Flow Cytometry: 1/50-1/100. Immunohistochemistry on Paraffin Sections: 1/50-1/100. |
| Reactivity: | Human |
| Host: | Rabbit |
| Isotype: | Ig |
| Clonality: | Polyclonal |
| Immunogen: | KLH conjugated synthetic peptide between 85-114 amino acids from the Central region of Human SPDYE3. |
| Specificity: | This antibody recognizes Human SPDYE3 (Center). |
| Formulation: | PBS containing 0.09% (W/V) Sodium Azide as preservative State: Aff - Purified State: Liquid purified Ig fraction |
| Concentration: | lot specific |
| Purification: | Protein A column, followed by peptide affinity purification |
| Conjugation: | Unconjugated |
| Storage: | Store undiluted at 2-8°C for one month or (in aliquots) at -20°C for longer. Avoid repeated freezing and thawing. |
| Stability: | Shelf life: one year from despatch. |
| Gene Name: | speedy/RINGO cell cycle regulator family member E3 |
| Database Link: | Entrez Gene 441272 Human A6NKU9 |
| Synonyms: | Speedy protein E3 |
| Note: | Molecular Weight: 63895 Da |

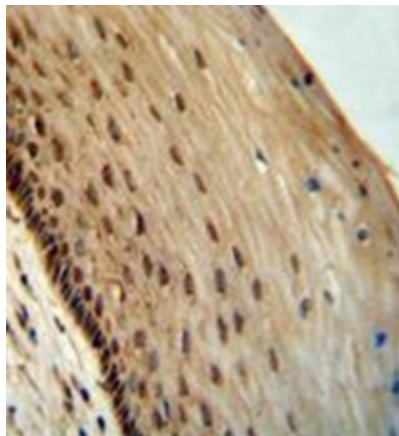


[View online »](#)

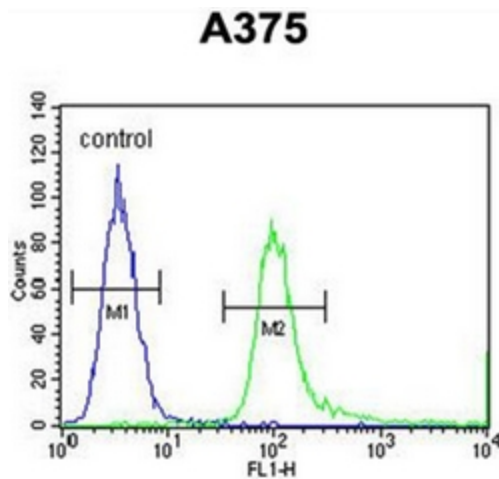
Product images:



Western blot analysis of SPDYE3 Antibody in A375 cell line lysates (35ug/lane). This demonstrates the SPDYE3 antibody detected the SPDYE3 protein (arrow).



Formalin fixed, paraffin embedded human cervical tissue stained with SPDYE3 Antibody followed by peroxidase conjugation of the secondary antibody and DAB staining. This data demonstrates the use of the SPDYE3 antibody (Center) for immunohistochemistry. Clinical relevance has not been evaluated.



Flow cytometric analysis of A375 cells using SPDYE3 Antibody (right histogram) compared to a negative control cell (left histogram). FITC-conjugated goat-anti-rabbit secondary antibodies were used for the analysis.