

Product datasheet for **AP54009PU-N**

SPDYE1 (C-term) Rabbit Polyclonal Antibody

Product data:

Product Type:	Primary Antibodies
Applications:	FC, WB
Recommended Dilution:	ELISA: 1/1000. Western Blot: 1/100-1/500. Flow Cytometry: 1/10-1/50.
Reactivity:	Human
Host:	Rabbit
Isotype:	Ig
Clonality:	Polyclonal
Immunogen:	KLH conjugated synthetic peptide between 249-279 amino acids from the C-terminal region of Human SPDYE1.
Specificity:	This antibody recognizes Human SPDYE1 (C-term).
Formulation:	PBS containing 0.09% (W/V) Sodium Azide as preservative State: Aff - Purified State: Liquid purified Ig fraction
Concentration:	lot specific
Purification:	Protein A column, followed by peptide affinity purification
Conjugation:	Unconjugated
Storage:	Store undiluted at 2-8°C for one month or (in aliquots) at -20°C for longer. Avoid repeated freezing and thawing.
Stability:	Shelf life: one year from despatch.
Gene Name:	speedy/RINGO cell cycle regulator family member E1
Database Link:	Entrez Gene 285955 Human Q8NFV5
Background:	This gene is located at chromosome 7p13 which is close to the Williams Beuren syndrome chromosome region 7q11.23. [provided by RefSeq].

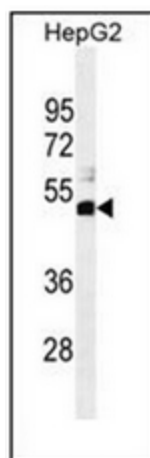


[View online »](#)

Synonyms: Speedy protein E1, WBSCR19, Williams-Beuren syndrome chromosomal region 19 protein

Note: **Molecular Weight:** 40668 Da

Product images:



Western blot analysis of SPDYE1 Antibody (C-term) in HepG2 cell line lysates (35ug/lane). This demonstrates the SPDYE1 antibody detected the SPDYE1 protein (arrow).