

Product datasheet for **AP54006PU-N**

SERPINB4 (C-term) Rabbit Polyclonal Antibody

Product data:

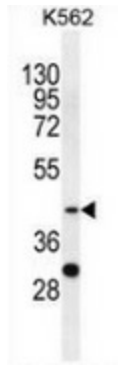
Product Type:	Primary Antibodies
Applications:	FC, WB
Recommended Dilution:	Flow cytometry: 1/10-1/50. Western blot: 1/100-1/500. Enzyme immunoassay: 1/1000.
Reactivity:	Human
Host:	Rabbit
Isotype:	Ig
Clonality:	Polyclonal
Immunogen:	Synthetic peptide - KLH conjugated - corresponding to the C-terminal region (between 275-304aa) of human SERPINB4 / SCCA2
Specificity:	This antibody recognizes SERPINB4 / SCCA2
Formulation:	PBS with 0.09% (W/V) Sodium azide State: Aff - Purified State: Liquid purified Ig fraction
Concentration:	lot specific
Conjugation:	Unconjugated
Storage:	Store undiluted at 2-8°C for one month or (in aliquots) at -20°C for longer. Avoid repeated freezing and thawing.
Stability:	Shelf life: one year from despatch.
Gene Name:	serpin family B member 4
Database Link:	Entrez Gene 6318 Human P48594
Background:	SERPINB4 may act as a protease inhibitor to modulate the host immune response against tumor cells.
Synonyms:	Serpin B4, SCCA-2, PI11, PI-11, Leupin
Note:	Molecular Weight: 44854 Da



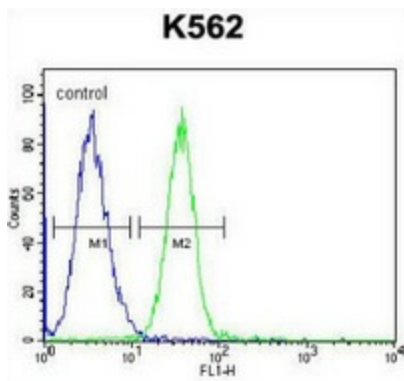
[View online »](#)

Protein Families: Druggable Genome, Secreted Protein

Product images:



Western blot analysis in K562 cell line lysates (35ug/lane) using SERPINB4 / SCCA2 antibody. (C-term). This demonstrates the SERPINB4 antibody detected the SERPINB4 protein (arrow).



Flow cytometric analysis of K562 cells (right histogram) compared to a negative control cell (left histogram) using SERPINB4 / SCCA2 antibody. (C-term), followed by FITC-conjugated goat-anti-rabbit secondary antibodies.