

## Product datasheet for **AP54005PU-N**

### SPATS1 (Center) Rabbit Polyclonal Antibody

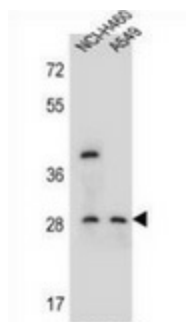
#### Product data:

Product Type:	Primary Antibodies
Applications:	WB
Recommended Dilution:	<b>Western blot:</b> 1/100-1/500. Enzyme immunoassay: 1/1000.
Reactivity:	Human
Host:	Rabbit
Isotype:	Ig
Clonality:	Polyclonal
Immunogen:	Synthetic peptide - KLH conjugated - corresponding to the central region (between 179-209aa) of human SPATS1
Specificity:	This antibody recognizes SPATS1.
Formulation:	PBS with 0.09% (W/V) Sodium azide State: Aff - Purified State: Liquid purified Ig fraction
Concentration:	lot specific
Purification:	Purified through a Protein A column followed by peptide affinity purification
Conjugation:	Unconjugated
Storage:	Store undiluted at 2-8°C for one month or (in aliquots) at -20°C for longer. Avoid repeated freezing and thawing.
Stability:	Shelf life: one year from despatch.
Gene Name:	spermatogenesis associated serine rich 1
Database Link:	<a href="#">Entrez Gene 221409 Human Q496A3</a>
Synonyms:	SPATA8, SRSP1
Note:	<b>Molecular Weight:</b> 33705 Da



[View online »](#)

## Product images:



Western blot analysis in NCI-H460, A549 cell line lysates (35ug/lane) using SPATS1 antibody. This demonstrates the SPATS1 antibody detected the SPATS1 protein (arrow).