

Product datasheet for **AP54004PU-N**

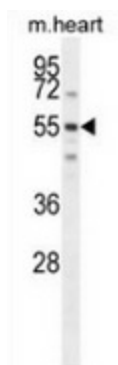
SPATC1 (N-term) Rabbit Polyclonal Antibody

Product data:

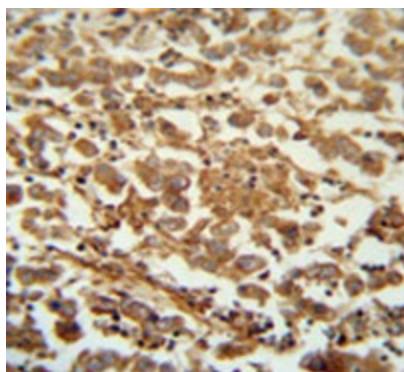
Product Type:	Primary Antibodies
Applications:	IHC, WB
Recommended Dilution:	Immunohistochemistry on Paraffin sections: 1/50-1/100. Western blot: 1/100-1/500. Enzyme immunoassay: 1/1000.
Reactivity:	Human, Mouse
Host:	Rabbit
Isotype:	Ig
Clonality:	Polyclonal
Immunogen:	Synthetic peptide - KLH conjugated - corresponding to the N-terminal region (between 3-33aa) of human Speriolin / SPATC1.
Specificity:	This antibody recognizes Speriolin / SPATC1
Formulation:	PBS with 0.09% (W/V) Sodium azide State: Aff - Purified State: Liquid purified Ig fraction
Concentration:	lot specific
Purification:	Purified through a Protein A column followed by peptide affinity purification
Conjugation:	Unconjugated
Storage:	Store undiluted at 2-8°C for one month or (in aliquots) at -20°C for longer. Avoid repeated freezing and thawing.
Stability:	Shelf life: one year from despatch.
Gene Name:	spermatogenesis and centriole associated 1
Database Link:	Entrez Gene 375686 Human Q76KD6
Synonyms:	SPATA15, SPRN
Note:	Molecular Weight: 62399 Da



[View online »](#)

Product images:

Western blot analysis in mouse heart tissue lysates (35ug/lane) using Speriolin / SPATC1 antibody. (N-term). This demonstrates the Speriolin antibody detected the Speriolin protein (arrow).



Immunohistochemistry analysis in human testis carcinoma (Formalin-fixed, Paraffin-embedded) using Speriolin / SPATC1 antibody. (N-term), followed by peroxidase conjugation of the secondary antibody and DAB staining. This data demonstrates the use of the Speriolin antibody for IHC; Clinical relevance has not been evaluated.