

## Product datasheet for **AP54003PU-N**

### **SPATA7 (C-term) Rabbit Polyclonal Antibody**

#### **Product data:**

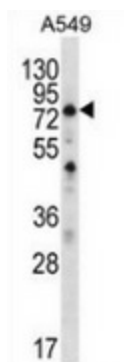
Product Type:	Primary Antibodies
Applications:	WB
Recommended Dilution:	<b>Western blot:</b> 1/100-1/500. Enzyme immunoassay: 1/1000.
Reactivity:	Human
Host:	Rabbit
Isotype:	Ig
Clonality:	Polyclonal
Immunogen:	Synthetic peptide - KLH conjugated - corresponding to the C-terminal region (between 341-369aa) of human SPATA7 / HSD3
Specificity:	This antibody recognizes SPATA7 / HSD3 at C-term.
Formulation:	PBS with 0.09% (W/V) Sodium azide State: Aff - Purified State: Liquid purified Ig fraction
Concentration:	lot specific
Purification:	Purified through a Protein A column followed by peptide affinity purification
Conjugation:	Unconjugated
Storage:	Store undiluted at 2-8°C for one month or (in aliquots) at -20°C for longer. Avoid repeated freezing and thawing.
Stability:	Shelf life: one year from despatch.
Gene Name:	spermatogenesis associated 7
Database Link:	<a href="#">Entrez Gene 55812 Human Q9P0W8</a>
Background:	The SPATA7 gene, originally isolated from testis, is also expressed in retina. Mutations in this gene are associated with Leber's congenital amaurosis (LCA) and juvenile retinitis pigmentosa. Alternatively spliced transcript variants encoding different isoforms have been found for this gene.
Synonyms:	Spermatogenesis-associated protein 7, HSD-3.1



[View online »](#)

Note: **Molecular Weight:** 67719 Da

### Product images:



Western blot analysis in A549 cell line lysates (35ug/lane) using SPATA7 / HSD3 antibody. (C-term). This demonstrates the SPATA7 antibody detected the SPATA7 protein (arrow).