

Product datasheet for **AP54002PU-N**

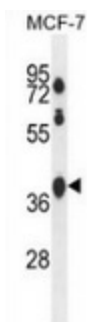
SPATA2L (Center) Rabbit Polyclonal Antibody

Product data:

Product Type:	Primary Antibodies
Applications:	WB
Recommended Dilution:	Western blot: 1/100-1/500. Enzyme immunoassay: 1/1000.
Reactivity:	Human
Host:	Rabbit
Isotype:	Ig
Clonality:	Polyclonal
Immunogen:	Synthetic peptide - KLH conjugated - corresponding to the central region (between 213-243aa) of human SPATA2L
Specificity:	This antibody recognizes SPATA2L.
Formulation:	PBS with 0.09% (W/V) Sodium azide State: Aff - Purified State: Liquid purified Ig fraction
Concentration:	lot specific
Purification:	Purified through a Protein A column followed by peptide affinity purification
Conjugation:	Unconjugated
Storage:	Store undiluted at 2-8°C for one month or (in aliquots) at -20°C for longer. Avoid repeated freezing and thawing.
Stability:	Shelf life: one year from despatch.
Gene Name:	spermatogenesis associated 2 like
Database Link:	Entrez Gene 124044 Human Q8IUW3
Background:	SPATA2L belongs to the SPATA2 family. The exact function of SPATA2L is not known. There are two different isoforms.
Synonyms:	Spermatogenesis-associated protein 2-like, SPATA2-like protein
Note:	Molecular Weight: 46179 Da



[View online »](#)

Product images:

Western blot analysis in MCF-7 cell line lysates (35ug/lane) using SPATA2L antibody. This demonstrates the SPATA2L antibody detected the SPATA2L protein (arrow).