

Product datasheet for **AP54000PU-N**

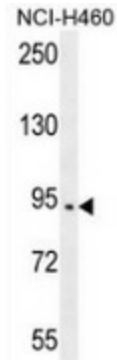
SPARCL1 (Center) Rabbit Polyclonal Antibody

Product data:

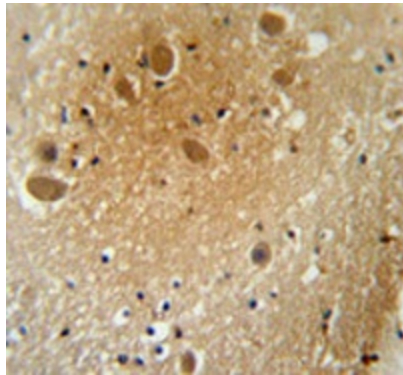
Product Type:	Primary Antibodies
Applications:	IHC, WB
Recommended Dilution:	Immunohistochemistry on Paraffin sections: 1/50-1/100. Western blot: 1/100-1/500. Enzyme immunoassay: 1/1000.
Reactivity:	Human
Host:	Rabbit
Isotype:	Ig
Clonality:	Polyclonal
Immunogen:	Synthetic peptide - KLH conjugated - corresponding to the central region (between 215-244aa) of human SPARCL1
Specificity:	This antibody recognizes SPARCL1.
Formulation:	PBS with 0.09% (W/V) Sodium azide State: Aff - Purified State: Liquid purified Ig fraction
Concentration:	lot specific
Purification:	Purified through a Protein A column followed by peptide affinity purification
Conjugation:	Unconjugated
Storage:	Store undiluted at 2-8°C for one month or (in aliquots) at -20°C for longer. Avoid repeated freezing and thawing.
Stability:	Shelf life: one year from despatch.
Gene Name:	Homo sapiens SPARC like 1 (SPARCL1), transcript variant 1
Database Link:	Entrez Gene 8404 Human Q14515
Synonyms:	SPARC-Like Protein 1, MAST9, MAST 9, PIG33
Note:	Molecular Weight: 75208 Da
Protein Families:	Druggable Genome, Secreted Protein



[View online »](#)

Product images:

Western blot analysis in NCI-H460 cell line lysates (35ug/lane) using SPARCL1 / Hevin antibody. This demonstrates the SPARCL1 antibody detected the SPARCL1 protein (arrow).



Immunohistochemistry analysis in human brain tissue (Formalin-fixed, Paraffin-embedded) using SPARCL1 / Hevin antibody., followed by peroxidase conjugation of the secondary antibody and DAB staining. This data demonstrates the use of the SPARCL1 antibody for IHC; Clinical relevance has not been evaluated.