

## Product datasheet for **AP53999PU-N**

### SPAG8 (C-term) Rabbit Polyclonal Antibody

#### Product data:

Product Type:	Primary Antibodies
Applications:	WB
Recommended Dilution:	<b>ELISA:</b> 1/1000. <b>Western Blot:</b> 1/100-1/500.
Reactivity:	Human
Host:	Rabbit
Isotype:	Ig
Clonality:	Polyclonal
Immunogen:	KLH conjugated synthetic peptide between 390-419 amino acids from the C-terminal region of Human SPAG8
Specificity:	This antibody recognizes Human SPAG8 / SMP1 (C-term).
Formulation:	PBS State: Aff - Purified State: Liquid purified Ig fraction Preservative: 0.09% Sodium Azide
Concentration:	lot specific
Purification:	Affinity Chromatography on Protein A
Conjugation:	Unconjugated
Storage:	Store undiluted at 2-8°C for one month or (in aliquots) at -20°C for longer. Avoid repeated freezing and thawing.
Stability:	Shelf life: one year from despatch.
Gene Name:	sperm associated antigen 8
Database Link:	<a href="#">Entrez Gene 26206 Human Q99932</a>



[View online »](#)

**Background:**

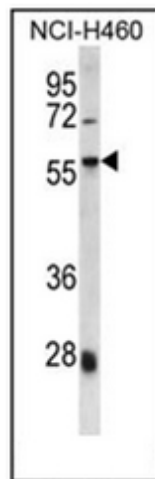
The correlation of anti-sperm antibodies with cases of unexplained infertility implicates a role for these antibodies in blocking fertilization. Improved diagnosis and treatment of immunologic infertility, as well as identification of proteins for targeted contraception, are dependent on the identification and characterization of relevant sperm antigens. The protein encoded by this gene is recognized by sperm agglutinating antibodies from an infertile woman. This protein is localized in germ cells of the testis at all stages of spermatogenesis and is localized to the acrosomal region of mature spermatozoa. Alternatively spliced variants that encode different protein isoforms have been described but the full-length sequences of only two have been determined.

**Synonyms:**

Sperm-associated antigen 8, SMP-1, Sperm membrane protein 1, BS-84, HSD-1

**Note:**

**Molecular Weight:** 44819 Da

**Product images:**

Western blot analysis of SPAG8 / SMP1 Antibody in NCI-H460 cell line lysates (35ug/lane). This demonstrates the SPAG8 antibody detected the SPAG8 protein (arrow).