

Product datasheet for **AP53998PU-N**

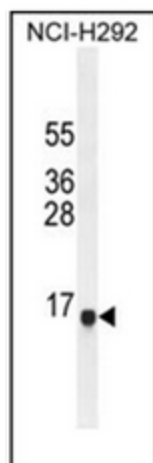
SPAG11B (N-term) Rabbit Polyclonal Antibody

Product data:

Product Type:	Primary Antibodies
Applications:	WB
Recommended Dilution:	ELISA: 1/1000. Western Blot: 1/100-1/500.
Reactivity:	Human
Host:	Rabbit
Isotype:	Ig
Clonality:	Polyclonal
Immunogen:	KLH conjugated synthetic peptide between 17-46 amino acids from the N-terminal region of Human SPAG11A.
Specificity:	This antibody recognizes Human Sperm antigen HE2 (N-term).
Formulation:	PBS State: Aff - Purified State: Liquid purified Ig fraction Preservative: 0.09% Sodium Azide
Concentration:	lot specific
Purification:	Affinity Chromatography on Protein A
Conjugation:	Unconjugated
Storage:	Store undiluted at 2-8°C for one month or (in aliquots) at -20°C for longer. Avoid repeated freezing and thawing.
Stability:	Shelf life: one year from despatch.
Gene Name:	sperm associated antigen 11B
Database Link:	Entrez Gene 653423 Human Entrez Gene 10407 Human Q6PDA7
Synonyms:	Sperm-associated antigen 11A, Protein EP2, SPAG11A, EP2, HE2
Note:	Molecular Weight: 13842 Da



[View online »](#)

Product images:

Western blot analysis of Sperm antigen HE2 Antibody (N-term) in NCI-H292 cell line lysates (35ug/lane). This demonstrates the SPAG11A antibody detected the SPAG11A protein (arrow).