

Product datasheet for **AP53997PU-N**

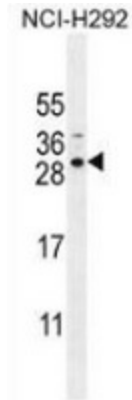
SPACA5 (N-term) Rabbit Polyclonal Antibody

Product data:

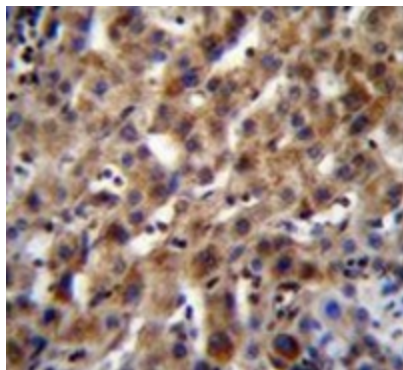
Product Type:	Primary Antibodies
Applications:	IHC, WB
Recommended Dilution:	Immunohistochemistry on Paraffin sections: 1/10-1/50. Western blot: 1/100-1/500. Enzyme immunoassay: 1/1000.
Reactivity:	Human
Host:	Rabbit
Isotype:	Ig
Clonality:	Polyclonal
Immunogen:	Synthetic peptide - KLH conjugated - corresponding to the N-terminal region (between 24-53aa) of human SPACA5B.
Specificity:	This antibody recognizes SPACA5B at N-term.
Formulation:	PBS with 0.09% (W/V) Sodium azide State: Aff - Purified State: Liquid purified Ig fraction
Concentration:	lot specific
Purification:	Purified through a Protein A column followed by peptide affinity purification
Conjugation:	Unconjugated
Storage:	Store undiluted at 2-8°C for one month or (in aliquots) at -20°C for longer. Avoid repeated freezing and thawing.
Stability:	Shelf life: one year from despatch.
Gene Name:	sperm acrosome associated 5
Database Link:	Entrez Gene 729201 Human Entrez Gene 389852 Human Q96QH8
Synonyms:	SPACA5,Sperm acrosome-associated protein 5,LYZL5, SPACA5A
Note:	Molecular Weight: 17896 Da



[View online »](#)

Product images:

Western blot analysis in NCI-H292 cell line lysates (35ug/lane) using antibody. (N-term). This demonstrates the SPACA5B antibody detected the SPACA5B protein (arrow).



Immunohistochemistry analysis in human liver tissue (Formalin-fixed, Paraffin-embedded) using SPACA5B antibody. (N-term), followed by peroxidase conjugation of the secondary antibody and DAB staining. This data demonstrates the use of SPACA5B antibody for IHC; Clinical relevance has not been evaluated.