

Product datasheet for **AP53994PU-N**

SPATA5L1 (C-term) Rabbit Polyclonal Antibody

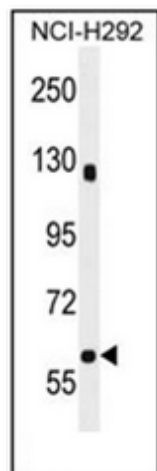
Product data:

Product Type:	Primary Antibodies
Applications:	WB
Recommended Dilution:	ELISA: 1/1000. Western Blot: 1/100-1/500.
Reactivity:	Human
Host:	Rabbit
Isotype:	Ig
Clonality:	Polyclonal
Immunogen:	KLH conjugated synthetic peptide between 592-621 amino acids from the C-terminal region of Human SPA5L
Specificity:	This antibody recognizes Human SPA5L (C-term).
Formulation:	PBS State: Aff - Purified State: Liquid purified Ig fraction Preservative: 0.09% Sodium Azide
Concentration:	lot specific
Purification:	Affinity Chromatography on Protein A
Conjugation:	Unconjugated
Storage:	Store undiluted at 2-8°C for one month or (in aliquots) at -20°C for longer. Avoid repeated freezing and thawing.
Stability:	Shelf life: one year from despatch.
Gene Name:	spermatogenesis associated 5 like 1
Database Link:	Entrez Gene 79029 Human Q9BVQ7
Synonyms:	Spermatogenesis-associated protein 5-like protein 1
Note:	Molecular Weight: 66kd Isoform 2. 80710 Da



[View online »](#)

Product images:



Western blot analysis of SPATA5L1 Antibody (C-term) in NCI-H292 cell line lysates (35ug/lane). This demonstrates the SPA5L antibody detected the SPA5L protein (arrow).