

Product datasheet for **AP53993PU-N**

SP8 (C-term) Rabbit Polyclonal Antibody

Product data:

Product Type:	Primary Antibodies
Applications:	WB
Recommended Dilution:	ELISA: 1/1000. Western Blot: 1/100-1/500.
Reactivity:	Human, Mouse
Host:	Rabbit
Isotype:	Ig
Clonality:	Polyclonal
Immunogen:	KLH conjugated synthetic peptide between 407-437 amino acids from the C-terminal region of Human SP8
Specificity:	This antibody recognizes SP8 (C-term).
Formulation:	PBS State: Aff - Purified State: Liquid purified Ig fraction Preservative: 0.09% Sodium Azide
Concentration:	lot specific
Purification:	Affinity Chromatography on Protein A
Conjugation:	Unconjugated
Storage:	Store undiluted at 2-8°C for one month or (in aliquots) at -20°C for longer. Avoid repeated freezing and thawing.
Stability:	Shelf life: one year from despatch.
Gene Name:	Sp8 transcription factor
Database Link:	Entrez Gene 221833 Human Q8IXZ3



[View online »](#)

Background:

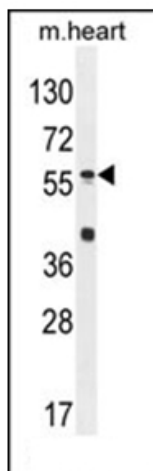
Transcription factor which plays a key role in limb development. Positively regulates FGF8 expression in the apical ectodermal ridge (AER) and contributes to limb outgrowth in embryos (By similarity).

Synonyms:

Transcription factor Sp8

Note:

Molecular Weight: 48674 Da

Product images:

Western blot analysis of SP8 Antibody (C-term) in Mouse heart tissue lysates (35ug/lane). This demonstrates the SP8 antibody detected the SP8 protein (arrow).