

Product datasheet for **AP53992PU-N**

SP6 (Center) Rabbit Polyclonal Antibody

Product data:

Product Type:	Primary Antibodies
Applications:	WB
Recommended Dilution:	ELISA: 1/1000. Western Blot: 1/100-1/500.
Reactivity:	Human
Host:	Rabbit
Isotype:	Ig
Clonality:	Polyclonal
Immunogen:	KLH conjugated synthetic peptide between 195-225 amino acids from the Central region of Human SP6.
Specificity:	This antibody recognizes Human SP6 (Center).
Formulation:	PBS State: Aff - Purified State: Liquid purified Ig fraction Preservative: 0.09% Sodium Azide
Concentration:	lot specific
Purification:	Affinity Chromatography on Protein A
Conjugation:	Unconjugated
Storage:	Store undiluted at 2-8°C for one month or (in aliquots) at -20°C for longer. Avoid repeated freezing and thawing.
Stability:	Shelf life: one year from despatch.
Gene Name:	Sp6 transcription factor
Database Link:	Entrez Gene 80320 Human Q3SY56



[View online »](#)

Background:

SP6 belongs to a family of transcription factors that contain 3 classical zinc finger DNA-binding domains consisting of a zinc atom tetrahedrally coordinated by 2 cysteines and 2 histidines (C2H2 motif). These transcription factors bind to GC-rich sequences and related GT and CACCC boxes (Schoy et al., 2000 [PubMed 11087666]).

Synonyms:

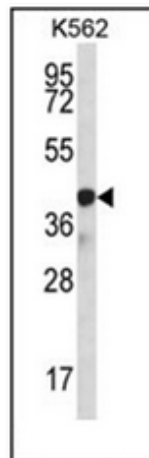
SP6, KLF14, Transcription factor Sp6, Krueppel-like factor 14

Note:

Molecular Weight: 39840 Da

Protein Families:

Transcription Factors

Product images:

Western blot analysis of SP6 / KLF14 Antibody in K562 cell line lysates (35ug/lane). This demonstrates the SP6 antibody detected the SP6 protein (arrow).