

Product datasheet for **AP53991PU-N**

SP5 (C-term) Rabbit Polyclonal Antibody

Product data:

Product Type:	Primary Antibodies
Applications:	FC, WB
Recommended Dilution:	ELISA: 1/1000. Western Blot: 1/100-1/500. Flow Cytometry: 1/10-1/50.
Reactivity:	Human, Mouse
Host:	Rabbit
Isotype:	Ig
Clonality:	Polyclonal
Immunogen:	KLH conjugated synthetic peptide between 368-398 amino acids from the C-terminal region of Human SP5.
Specificity:	This antibody recognizes Human and Mouse SP5 (C-term).
Formulation:	PBS State: Purified State: Liquid purified Ig fraction Preservative: 0.09% Sodium Azide
Concentration:	lot specific
Purification:	Affinity Chromatography on Protein A
Conjugation:	Unconjugated
Storage:	Store undiluted at 2-8°C for one month or (in aliquots) at -20°C for longer. Avoid repeated freezing and thawing.
Stability:	Shelf life: one year from despatch.
Gene Name:	Sp5 transcription factor
Database Link:	Entrez Gene 389058 Human Q6BEB4



[View online »](#)

Background:

SP5 binds to GC boxes promoters elements. SP5 probable transcriptional activator that has a role in the coordination of changes in transcription required to generate pattern in the developing embryo.

Synonyms:

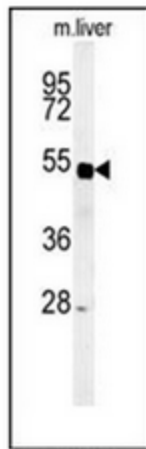
Transcription factor Sp5

Note:

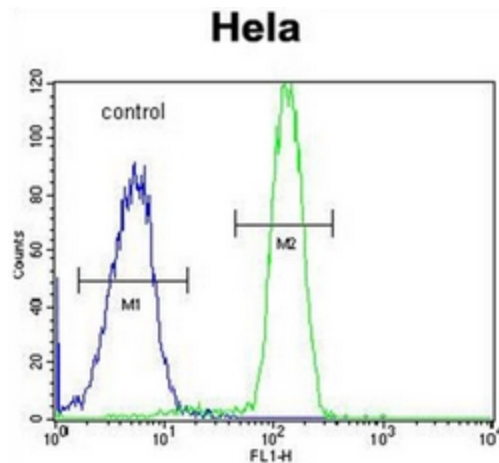
Molecular Weight: 41964 Da

Protein Families:

Transcription Factors

Product images:

Western blot analysis of SP5 Antibody (C-term) in Mouse liver tissue lysates (35ug/lane). SP5 (arrow) was detected using the purified Pab.



Flow cytometric analysis of HeLa cells using SP5 Antibody (C-term) (right histogram) compared to a negative control cell (left histogram). FITC-conjugated goat-anti-rabbit secondary antibodies were used for the analysis.