

Product datasheet for **AP53988PU-N**

SP100 (N-term) Rabbit Polyclonal Antibody

Product data:

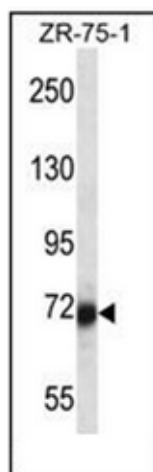
Product Type:	Primary Antibodies
Applications:	WB
Recommended Dilution:	ELISA: 1/1000. Western Blot: 1/100-1/500.
Reactivity:	Human
Host:	Rabbit
Isotype:	Ig
Clonality:	Polyclonal
Immunogen:	KLH conjugated synthetic peptide between 198-227 amino acids from the N-terminal region of Human SP100
Specificity:	This antibody recognizes Human SP100 (N-term).
Formulation:	PBS State: Aff - Purified State: Liquid purified Ig fraction Preservative: 0.09% Sodium Azide
Concentration:	lot specific
Purification:	Affinity Chromatography on Protein A
Conjugation:	Unconjugated
Storage:	Store undiluted at 2-8°C for one month or (in aliquots) at -20°C for longer. Avoid repeated freezing and thawing.
Stability:	Shelf life: one year from despatch.
Gene Name:	SP100 nuclear antigen
Database Link:	Entrez Gene 6672 Human P23497
Background:	SP100 may play a role in the control of gene expression.
Synonyms:	Nuclear antigen Sp-100, Speckled 100 kDa, DKFZp686E07254, FLJ00340, Lysp100b
Note:	Molecular Weight: Isoform Sp100-B 78kd. 100417 Da



[View online »](#)

Protein Families: Transcription Factors

Product images:



Western blot analysis of SP100 Antibody (N-term) in ZR-75-1 cell line lysates (35ug/lane). This demonstrates the SP100 antibody detected the SP100 protein (arrow).