

Product datasheet for **AP53987PU-N**

SP1 (C-term) Rabbit Polyclonal Antibody

Product data:

Product Type:	Primary Antibodies
Applications:	FC, IF, IHC, WB
Recommended Dilution:	Flow cytometry: 1/10-1/50. Immunofluorescence: 1/10-1/50. Immunohistochemistry on Paraffin sections: 1/50-1/100. Western blot: 1/100-1/500. Enzyme immunoassay: 1/1000.
Reactivity:	Human
Host:	Rabbit
Isotype:	Ig
Clonality:	Polyclonal
Immunogen:	Synthetic peptide - KLH conjugated - corresponding to the C-terminal region (between 684-715aa) of human SP1 / TSFP1
Specificity:	This antibody recognizes SP1 / TSFP1 at C-term.
Formulation:	PBS with 0.09% (W/V) Sodium azide State: Aff - Purified State: Liquid purified Ig fraction
Concentration:	lot specific
Purification:	Purified through a Protein A column followed by peptide affinity purification
Conjugation:	Unconjugated
Storage:	Store undiluted at 2-8°C for one month or (in aliquots) at -20°C for longer. Avoid repeated freezing and thawing.
Stability:	Shelf life: one year from despatch.
Gene Name:	Sp1 transcription factor
Database Link:	Entrez Gene 6667 Human P08047



[View online »](#)

Background: Transcription factor that can activate or repress transcription in response to physiological and pathological stimuli. Binds with high affinity to GC-rich motifs and regulates the expression of a large number of genes involved in a variety of processes such as cell growth, apoptosis, differentiation and immune responses. Highly regulated by post-translational modifications (phosphorylations, sumoylation, proteolytic cleavage, glycosylation and acetylation). Binds also the PDGFR-alpha G-box promoter. May have a role in modulating the cellular response to DNA damage. Implicated in chromatin remodeling. Plays a role in the recruitment of SMARCA4/BRG1 on the c-FOS promoter. Plays an essential role in the regulation of FE65 gene expression.

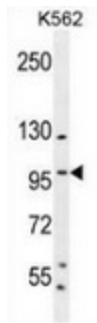
Synonyms: Transcription factor Sp1

Note: **Molecular Weight:** 80693 Da

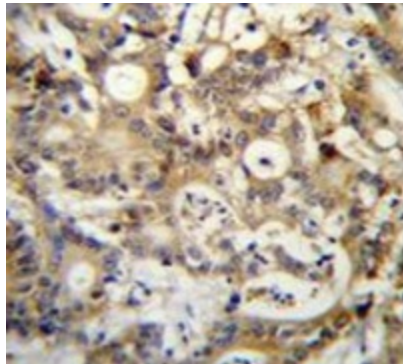
Protein Families: Druggable Genome, ES Cell Differentiation/IPS, Stem cell - Pluripotency, Stem cell relevant signaling - JAK/STAT signaling pathway, Transcription Factors

Protein Pathways: Huntington's disease, TGF-beta signaling pathway

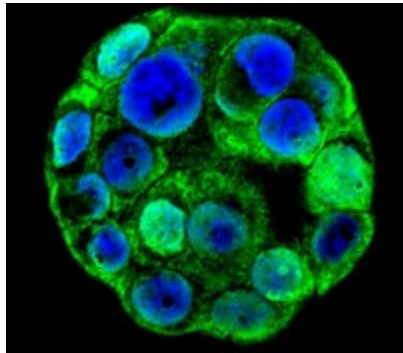
Product images:



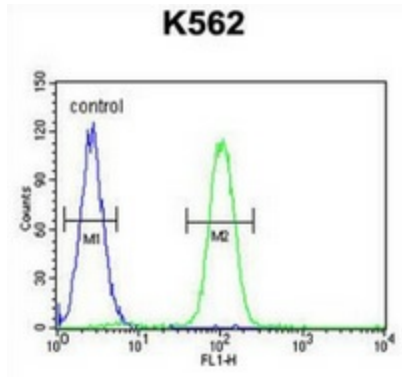
Western blot analysis in K562 cell line lysates (35ug/lane) using SP1 / TSFP1 antibody. (C-term). This demonstrates the SP1 antibody detected the SP1 protein (arrow).



Immunohistochemistry analysis in human colon carcinoma (Formalin-fixed, Paraffin-embedded) using SP1 / TSFP1 antibody. (C-term), followed by peroxidase conjugation of the secondary antibody and DAB staining. This data demonstrates the use of SP1 / TSFP1 antibody for IHC; Clinical relevance has not been evaluated.



Confocal immunofluorescent analysis with WiDr cells using SP1 / TSFP1 antibody. (C-term), followed by Alexa Fluor 488-conjugated goat anti-rabbit IgG (green). DAPI was used to stain the cell nuclear (blue).



Flow cytometric analysis of K562 cells (right histogram) compared to a negative control cell (left histogram) using SP1 / TSFP1 antibody. (C-term), followed by FITC-conjugated goat-anti-rabbit secondary antibody. were used for the analysis.