

## Product datasheet for **AP53980PU-N**

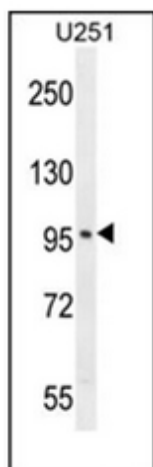
### SOBP (C-term) Rabbit Polyclonal Antibody

#### Product data:

Product Type:	Primary Antibodies
Applications:	WB
Recommended Dilution:	<b>ELISA:</b> 1/1000 <b>Western Blot:</b> 1/100-1/500.
Reactivity:	Human
Host:	Rabbit
Isotype:	Ig
Clonality:	Polyclonal
Immunogen:	KLH conjugated synthetic peptide between 839-869 amino acids from the C-terminal region of Human SOBP.
Specificity:	This antibody recognizes Human SOBP (C-term).
Formulation:	PBS State: Aff - Purified State: Liquid purified Ig fraction Preservative: 0.09% Sodium Azide
Concentration:	lot specific
Purification:	Affinity Chromatography on Protein A
Conjugation:	Unconjugated
Storage:	Store undiluted at 2-8°C for one month or (in aliquots) at -20°C for longer. Avoid repeated freezing and thawing.
Stability:	Shelf life: one year from despatch.
Gene Name:	sine oculis binding protein homolog
Database Link:	<a href="#">Entrez Gene 55084 Human A7XYQ1</a>
Background:	Implicated in development of the cochlea (By similarity).
Synonyms:	Sine oculis-binding protein homolog,JXC1
Note:	<b>Molecular Weight:</b> 92658 Da



[View online »](#)

**Product images:**

Western blot analysis of SOBP Antibody (C-term) in U251 cell line lysates (35ug/lane). This demonstrates the SOBP antibody detected the SOBP protein (arrow).