

Product datasheet for **AP53970PU-N**

SNURPORTIN1 (SNUPN) (Center) Rabbit Polyclonal Antibody

Product data:

Product Type:	Primary Antibodies
Applications:	WB
Recommended Dilution:	This antibody is suitable for Western blotting . The suggested dilution is: 1/100-1/500.
Reactivity:	Human
Host:	Rabbit
Isotype:	Ig
Clonality:	Polyclonal
Immunogen:	Synthetic peptide - KLH conjugated - corresponding to the central region (between 199-228aa) of human Snurportin-1 (SNUPN).
Specificity:	This antibody detects Snurportin-1 (SNUPN).
Formulation:	PBS with 0.09% (W/V) Sodium Azide. State: Aff - Purified State: Liquid purified Ig fraction
Concentration:	lot specific
Purification:	Purified through a protein A column; followed by peptide affinity purification.
Conjugation:	Unconjugated
Storage:	Store the antibody undiluted at 2-8°C for one month or (in aliquots) at -20°C for longer. Avoid repeated freezing and thawing.
Stability:	Shelf life: one year from despatch.
Gene Name:	snurportin 1
Database Link:	Entrez Gene 10073 Human O95149
Background:	The nuclear import of the spliceosomal snRNPs U1, U2, U4 and U5, is dependent on the presence of a complex nuclear localization signal. The latter is composed of the 5'-2,2,7-terminal trimethylguanosine (m3G) cap structure of the U snRNA and the Sm core domain. The protein encoded by this gene interacts specifically with m3G-cap and functions as an snRNP-specific nuclear import receptor. Alternatively spliced transcript variants encoding the same protein have been identified for this gene.

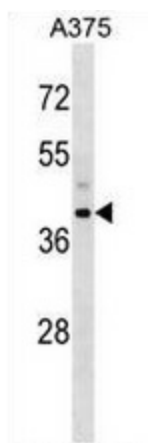


[View online »](#)

Synonyms: Snurportin1, RNUT1, SPN1, KPNBL

Note: **Molecular Weight:** 41143 Da

Product images:



Western blot analysis in A375 cell line lysates (35ug/lane) using Snurportin-1 (SNUPN) antibody. This demonstrates the SNUPN antibody detected the SNUPN protein (arrow).