

## Product datasheet for **AP53969PU-N**

### Syntrophin (SNTB2) (Center) Rabbit Polyclonal Antibody

#### Product data:

Product Type:	Primary Antibodies
Applications:	WB
Recommended Dilution:	This antibody is suitable for <b>Western blotting</b> . The suggested dilution is: 1/100-1/500.
Reactivity:	Human
Host:	Rabbit
Isotype:	Ig
Clonality:	Polyclonal
Immunogen:	Synthetic peptide - KLH conjugated - corresponding to the central region (between 216-245aa) of human Syntrophin-3 / SNTB2.
Specificity:	This antibody detects human Syntrophin-3 / SNTB2.
Formulation:	PBS with 0.09% (W/V) Sodium Azide. State: Aff - Purified State: Liquid purified Ig fraction
Concentration:	lot specific
Purification:	Purified through a protein A column,; followed by peptide affinity purification.
Conjugation:	Unconjugated
Storage:	Store the antibody undiluted at 2-8°C for one month or (in aliquots) at -20°C for longer. Avoid repeated freezing and thawing.
Stability:	Shelf life: one year from despatch.
Gene Name:	syntrophin beta 2
Database Link:	<a href="#">Entrez Gene 6645 Human Q13425</a>



[View online »](#)

**Background:**

Syntrophins are structurally related proteins located at the neuromuscular synapse and play an important role in dystrophin associated protein (DAP) complex formation. To date there have been three distinct syntrophin isoforms discovered: alpha 1, beta 1, and beta 2. These proteins each contain a PDZ domain, a syntrophin-unique domain (SU), and three pleckstrin homology domains (PH1a,1b and 2). The PDZ domain has been shown to be responsible for binding syntrophin to nNOS and the DAP complex. This association results in localization of the nicotinic acetylcholine receptor to the cytoskeleton via the (S/T)XV C terminus.

**Synonyms:**

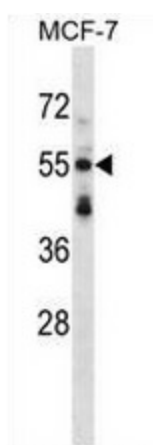
SNT3, Beta-2-syntrophin, Syntrophin-like, SNTL, SNT2B2

**Note:**

**Molecular Weight:** 57950 Da

**Protein Families:**

Secreted Protein

**Product images:**

Western blot analysis in MCF-7 cell line lysates (35ug/lane) using Syntrophin-3 / SNTB2 antibody. This demonstrates the Syntrophin-3 antibody detected the Syntrophin-3 protein (arrow).