

## Product datasheet for **AP53967PU-N**

### SNRPD3 (N-term) Rabbit Polyclonal Antibody

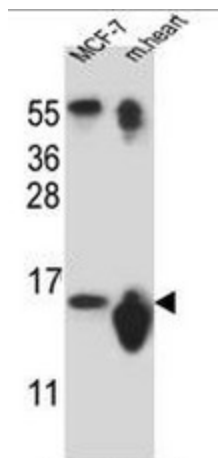
#### Product data:

Product Type:	Primary Antibodies
Applications:	WB
Recommended Dilution:	<b>ELISA:</b> 1/1000. <b>Western blot:</b> 1/100 - 1/500.
Reactivity:	Human, Mouse
Host:	Rabbit
Isotype:	Ig
Clonality:	Polyclonal
Immunogen:	KLH conjugated synthetic peptide between 8-38 amino acids from the N-terminal region of human SNRPD3
Specificity:	This antibody reacts to SNRPD3.
Formulation:	PBS State: Aff - Purified State: Liquid purified Ig fraction Preservative: 0.09% (W/V) sodium azide
Concentration:	lot specific
Purification:	Affinity chromatography on Protein A
Conjugation:	Unconjugated
Storage:	Store the antibody undiluted at 2-8°C for one month or (in aliquots) at -20°C for longer. Avoid repeated freezing and thawing.
Stability:	Shelf life: one year from despatch.
Predicted Protein Size:	13916 Da
Gene Name:	small nuclear ribonucleoprotein D3 polypeptide
Database Link:	<a href="#">Entrez Gene 6634 Human P62318</a>
Background:	The protein encoded by this gene belongs to the small nuclear ribonucleoprotein core protein family. It is required for pre-mRNA splicing and small nuclear ribonucleoprotein biogenesis.



[View online »](#)

**Synonyms:** SNRPD3, snRNP core protein D3  
**Protein Families:** Druggable Genome  
**Protein Pathways:** Spliceosome, Systemic lupus erythematosus

**Product images:**

SNRPD3 Antibody (N-term) western blot analysis in MCF-7 cell line and mouse heart tissue lysates (35ug/lane). This demonstrates the SNRPD3 antibody detected the SNRPD3 protein (arrow).