

Product datasheet for **AP53966PU-N**

SNRPD3 (C-term) Rabbit Polyclonal Antibody

Product data:

| | |
|-------------------------|--|
| Product Type: | Primary Antibodies |
| Applications: | FC, IHC, WB |
| Recommended Dilution: | ELISA: 1/1000. Western blot: 1/100-1/500. Flow Cytometry: 1/10-1/50. Immunohistochemistry on Paraffin Sections: 1/50-1/100. |
| Reactivity: | Human |
| Host: | Rabbit |
| Isotype: | Ig |
| Clonality: | Polyclonal |
| Immunogen: | KLH conjugated synthetic peptide between 97~126 amino acids from the C-terminal region of Human snRNP-D3 / Sm-D3 |
| Specificity: | This antibody recognizes Human snRNP-D3 / Sm-D3 (C-term). |
| Formulation: | PBS containing 0.09% (W/V) Sodium Azide as preservative State: Aff - Purified State: Liquid purified Ig fraction |
| Concentration: | lot specific |
| Purification: | Protein A column, followed by peptide affinity purification |
| Conjugation: | Unconjugated |
| Storage: | Store the antibody undiluted at 2-8°C for one month or (in aliquots) at -20°C for longer. Avoid repeated freezing and thawing. |
| Stability: | Shelf life: one year from despatch. |
| Predicted Protein Size: | 13916 Da |
| Gene Name: | small nuclear ribonucleoprotein D3 polypeptide |
| Database Link: | Entrez Gene 6634 Human P62318 |
| Background: | The protein belongs to the small nuclear ribonucleoprotein core protein family. It is required for pre-mRNA splicing and small nuclear ribonucleoprotein biogenesis. |



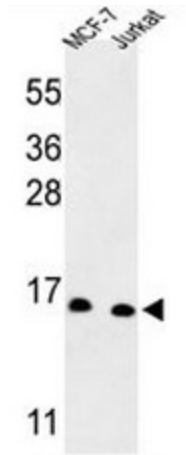
[View online »](#)

Synonyms: SNRPD3, snRNP core protein D3

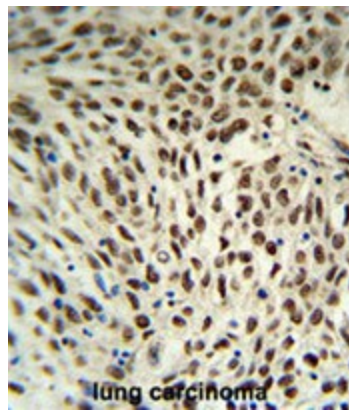
Protein Families: Druggable Genome

Protein Pathways: Spliceosome, Systemic lupus erythematosus

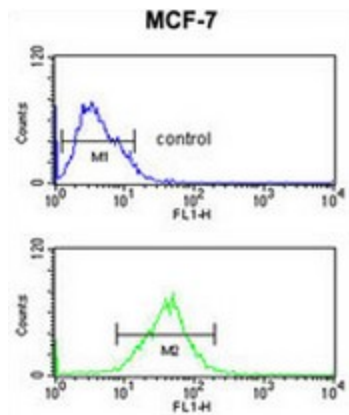
Product images:



Western blot analysis of SNRPD3 Antibody (C-term) in MCF-7, Jurkat cell line lysates (35ug/lane). SNRPD3 (arrow) was detected using the purified Pab.



SNRPD3 Antibody (C-term) IHC analysis in formalin fixed and paraffin embedded human lung carcinoma followed by peroxidase conjugation of the secondary antibody and DAB staining. This data demonstrates the use of the SNRPD3 Antibody (C-term) for immunohistochemistry. Clinical relevance has not been evaluated.



SNRPD3 Antibody (C-term) flow cytometric analysis of MCF-7 cells (bottom histogram) compared to a negative control cell (top histogram). FITC-conjugated goat-anti-rabbit secondary antibodies were used for the analysis.