

Product datasheet for **AP53965PU-N**

SNRPB2 (N-term) Rabbit Polyclonal Antibody

Product data:

Product Type:	Primary Antibodies
Applications:	WB
Recommended Dilution:	ELISA: 1/1000. Western blot: 1/100 - 1/500.
Reactivity:	Human
Host:	Rabbit
Isotype:	Ig
Clonality:	Polyclonal
Immunogen:	KLH conjugated synthetic peptide between 7-36 amino acids from the N-terminal region of human SNRPB2
Specificity:	This antibody reacts to SNRPB2.
Formulation:	PBS State: Aff - Purified State: Liquid purified Ig fraction Preservative: 0.09% (W/V) sodium azide
Concentration:	lot specific
Purification:	Affinity chromatography on Protein A
Conjugation:	Unconjugated
Storage:	Store the antibody undiluted at 2-8°C for one month or (in aliquots) at -20°C for longer. Avoid repeated freezing and thawing.
Stability:	Shelf life: one year from despatch.
Predicted Protein Size:	25486 Da
Gene Name:	small nuclear ribonucleoprotein polypeptide B2
Database Link:	Entrez Gene 6629 Human P08579



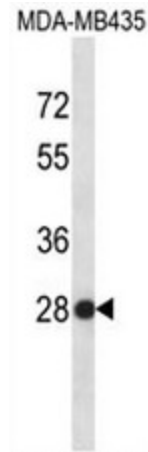
[View online »](#)

Background: The protein encoded by this gene associates with stem loop IV of U2 small nuclear ribonucleoprotein (U2 snRNP) in the presence of snRNP-A'. The encoded protein may play a role in pre-mRNA splicing. Autoantibodies from patients with systemic lupus erythematosus frequently recognize epitopes on the encoded protein. Two transcript variants encoding the same protein have been found for this gene.

Synonyms: U2 snRNP B", SNRPB2

Protein Pathways: Spliceosome

Product images:



SNRPB2 Antibody (N-term) western blot analysis in MDA-MB435 cell line lysates (35ug/lane). This demonstrates the SNRPB2 antibody detected the SNRPB2 protein (arrow).