

Product datasheet for **AP53964PU-N**

U1A (SNRPA) (Center) Rabbit Polyclonal Antibody

Product data:

Product Type:	Primary Antibodies
Applications:	WB
Recommended Dilution:	ELISA: 1/1000. Western blot: 1/100 - 1/500.
Reactivity:	Human
Host:	Rabbit
Isotype:	Ig
Clonality:	Polyclonal
Immunogen:	KLH conjugated synthetic peptide between 82-111 amino acids from the Central region of human SNRPA
Specificity:	This antibody reacts to SNRPA.
Formulation:	PBS State: Aff - Purified State: Liquid purified Ig fraction Preservative: 0.09% (W/V) sodium azide
Concentration:	lot specific
Purification:	Affinity chromatography on Protein A
Conjugation:	Unconjugated
Storage:	Store the antibody undiluted at 2-8°C for one month or (in aliquots) at -20°C for longer. Avoid repeated freezing and thawing.
Stability:	Shelf life: one year from despatch.
Predicted Protein Size:	31280 Da
Gene Name:	small nuclear ribonucleoprotein polypeptide A
Database Link:	Entrez Gene 6626 Human P09012



[View online »](#)

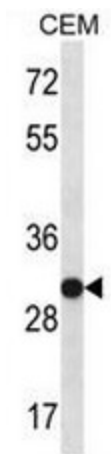
Background: The protein encoded by this gene associates with stem loop II of the U1 small nuclear ribonucleoprotein, which binds the 5' splice site of precursor mRNAs and is required for splicing. The encoded protein autoregulates itself by polyadenylation inhibition of its own pre-mRNA via dimerization and has been implicated in the coupling of splicing and polyadenylation.

Synonyms: U1A protein, U1-A, SNRPA

Protein Families: Stem cell - Pluripotency

Protein Pathways: Spliceosome

Product images:



SNRPA Antibody (Center) western blot analysis in CEM cell line lysates (35ug/lane). This demonstrates the SNRPA antibody detected the SNRPA protein (arrow).