

Product datasheet for **AP53961PU-N**

SNIP1 (N-term) Rabbit Polyclonal Antibody

Product data:

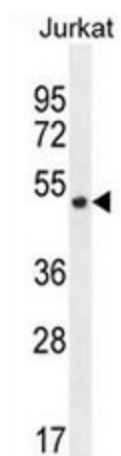
Product Type:	Primary Antibodies
Applications:	WB
Recommended Dilution:	ELISA: 1/1000. Western Blot: 1/100 - 1/500.
Reactivity:	Human
Host:	Rabbit
Isotype:	Ig
Clonality:	Polyclonal
Immunogen:	KLH conjugated synthetic peptide between 90-118 amino acids from the N-terminal region of human SNIP1
Specificity:	This antibody reacts to SNIP1.
Formulation:	PBS State: Aff - Purified State: Liquid purified Ig fraction Preservative: 0.09% (W/V) sodium azide
Concentration:	lot specific
Purification:	Affinity chromatography on Protein A
Conjugation:	Unconjugated
Storage:	Store the antibody undiluted at 2-8°C for one month or (in aliquots) at -20°C for longer. Avoid repeated freezing and thawing.
Stability:	Shelf life: one year from despatch.
Predicted Protein Size:	45778 Da
Gene Name:	Smad nuclear interacting protein 1
Database Link:	Entrez Gene 79753 Human Q8TAD8
Background:	Down-regulates NF-kappa-B signaling by competing with RELA for CREBBP/EP300 binding. SNIP1 is involved in the microRNA (miRNA) biogenesis.



[View online »](#)

Synonyms: dj423B22.2; FLJ12553; RP3-423B22.3

Product images:



SNIP1 Antibody (N-term) western blot analysis in Jurkat cell line lysates (35ug/lane). This demonstrates the SNIP1 antibody detected the SNIP1 protein (arrow).