

Product datasheet for **AP53957PU-N**

SNAP43 (SNAPC1) (Center) Rabbit Polyclonal Antibody

Product data:

Product Type:	Primary Antibodies
Applications:	WB
Recommended Dilution:	ELISA: 1/1000. Western Blot: 1/100 - 1/500.
Reactivity:	Human
Host:	Rabbit
Isotype:	Ig
Clonality:	Polyclonal
Immunogen:	KLH conjugated synthetic peptide between 138-168 amino acids from the Central region of human SNAPC1
Specificity:	This antibody reacts to SNAPC1.
Formulation:	PBS State: Aff - Purified State: Liquid purified Ig fraction Preservative: 0.09% (W/V) sodium azide
Concentration:	lot specific
Purification:	Affinity chromatography on Protein A
Conjugation:	Unconjugated
Storage:	Store the antibody undiluted at 2-8°C for one month or (in aliquots) at -20°C for longer. Avoid repeated freezing and thawing.
Stability:	Shelf life: one year from despatch.
Predicted Protein Size:	42994 Da
Gene Name:	small nuclear RNA activating complex polypeptide 1
Database Link:	Entrez Gene 6617 Human Q16533



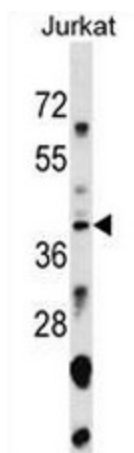
[View online »](#)

Background: Part of the SNAPc complex required for the transcription of both RNA polymerase II and III small-nuclear RNA genes. Binds to the proximal sequence element (PSE), a non-TATA-box basal promoter element common to these 2 types of genes. Recruits TBP and BRF2 to the U6 snRNA TATA box.

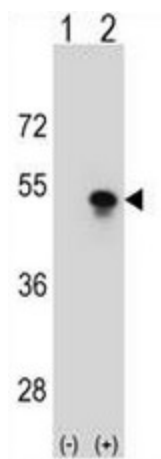
Synonyms: SNAPc subunit 1, SNAP-43

Protein Families: Transcription Factors

Product images:



SNAPC1 Antibody (Center) western blot analysis in Jurkat cell line lysates (35ug/lane). This demonstrates the SNAPC1 antibody detected the SNAPC1 protein (arrow).



Western blot analysis of SNAPC1 (arrow) using rabbit polyclonal SNAPC1 Antibody (Center). 293 cell lysates (2 ug/lane) either nontransfected (Lane 1) or transiently transfected (Lane 2) with the SNAPC1 gene.