

## Product datasheet for **AP53955PU-N**

### SMYD4 (C-term) Rabbit Polyclonal Antibody

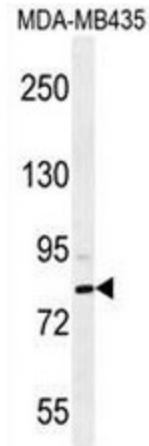
#### Product data:

Product Type:	Primary Antibodies
Applications:	FC, IHC, WB
Recommended Dilution:	<b>ELISA:</b> 1/1000. <b>Western Blot:</b> 1/100 - 1/500. <b>Immunohistochemistry on paraffin sections:</b> 1/50 - 1/100. <b>Flow Cytometry:</b> 1/10 - 1/50.
Reactivity:	Human
Host:	Rabbit
Isotype:	Ig
Clonality:	Polyclonal
Immunogen:	KLH conjugated synthetic peptide between 548-576 amino acids from the C-terminal region of human SMYD4
Specificity:	This antibody reacts to SMYD4.
Formulation:	PBS State: Aff - Purified State: Liquid purified Ig fraction Preservative: 0.09% (W/V) sodium azide
Concentration:	lot specific
Purification:	Affinity chromatography on Protein A
Conjugation:	Unconjugated
Storage:	Store the antibody undiluted at 2-8°C for one month or (in aliquots) at -20°C for longer. Avoid repeated freezing and thawing.
Stability:	Shelf life: one year from despatch.
Predicted Protein Size:	89225 Da
Gene Name:	SET and MYND domain containing 4
Database Link:	<a href="#">Entrez Gene 114826 Human Q8IYR2</a>
Synonyms:	KIAA1936

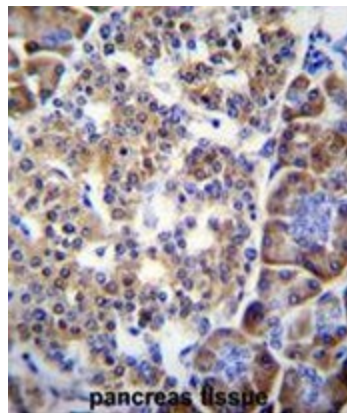


[View online »](#)

**Product images:**

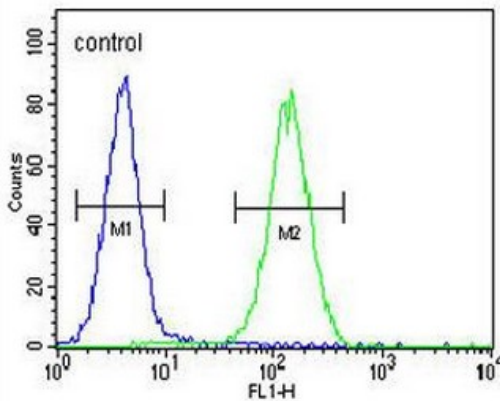


SMYD4 Antibody (C-term) western blot analysis in MDA-MB435 cell line lysates (35ug/lane). This demonstrates the SMYD4 antibody detected the SMYD4 protein (arrow).



SMYD4 Antibody (C-term) immunohistochemistry analysis in formalin fixed and paraffin embedded human pancreas tissue followed by peroxidase conjugation of the secondary antibody and DAB staining. This data demonstrates the use of SMYD4 Antibody (C-term) for immunohistochemistry. Clinical relevance has not been evaluated.

**MDA-MB435**



SMYD4 Antibody (C-term) flow cytometric analysis of MDA-MB435 cells (right histogram) compared to a negative control cell (left histogram). FITC-conjugated goat-anti-rabbit secondary antibodies were used for the analysis.