

## Product datasheet for **AP53954PU-N**

### SMYD1 (C-term) Rabbit Polyclonal Antibody

#### Product data:

Product Type:	Primary Antibodies
Applications:	FC, WB
Recommended Dilution:	<b>ELISA:</b> 1/1000. <b>Western Blot:</b> 1/100 - 1/500. <b>Flow Cytometry:</b> 1/10 - 1/50.
Reactivity:	Human
Host:	Rabbit
Isotype:	Ig
Clonality:	Polyclonal
Immunogen:	KLH conjugated synthetic peptide between 420-449 amino acids from the C-terminal region of human SMYD1
Specificity:	This antibody reacts to SMYD1.
Formulation:	PBS State: Aff - Purified State: Liquid purified Ig fraction Preservative: 0.09% (W/V) sodium azide
Concentration:	lot specific
Purification:	Affinity chromatography on Protein A
Conjugation:	Unconjugated
Storage:	Store the antibody undiluted at 2-8°C for one month or (in aliquots) at -20°C for longer. Avoid repeated freezing and thawing.
Stability:	Shelf life: one year from despatch.
Predicted Protein Size:	56617 Da
Gene Name:	Homo sapiens SET and MYND domain containing 1 (SMYD1), transcript variant 1
Database Link:	<a href="#">Entrez Gene 150572 Human</a> <a href="#">Q8NB12</a>
Background:	Acts as a transcriptional repressor. Essential for cardiomyocyte differentiation and cardiac morphogenesis (By similarity).

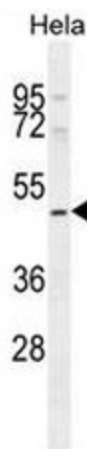


[View online »](#)

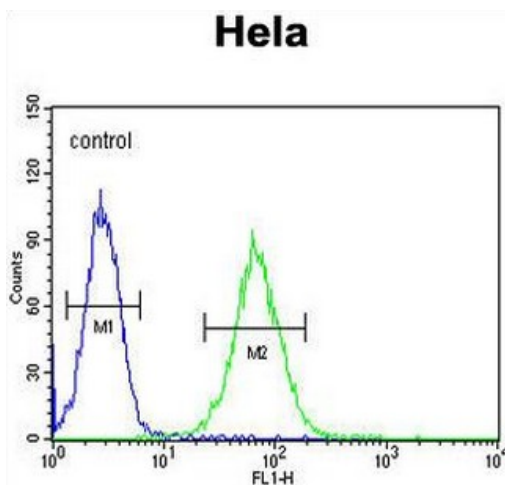
**Synonyms:** BOP; ZMYND18; ZMYND22

**Protein Families:** Druggable Genome

**Product images:**



SMYD1 Antibody (C-term) western blot analysis in HeLa cell line lysates (35ug/lane). This demonstrates the SMYD1 antibody detected the SMYD1 protein (arrow).



SMYD1 Antibody (C-term) flow cytometric analysis of HeLa cells (right histogram) compared to a negative control cell (left histogram). FITC-conjugated goat-anti-rabbit secondary antibodies were used for the analysis.