

Product datasheet for **AP53953PU-N**

SMURF1 (Center) Rabbit Polyclonal Antibody

Product data:

Product Type:	Primary Antibodies
Applications:	WB
Recommended Dilution:	ELISA: 1/1000. Western Blot: 1/100 - 1/500.
Reactivity:	Human, Mouse
Host:	Rabbit
Isotype:	Ig
Clonality:	Polyclonal
Immunogen:	KLH conjugated synthetic peptide between 351-381 amino acids from the Central region of human SMURF1
Specificity:	This antibody reacts to SMURF1.
Formulation:	PBS State: Aff - Purified State: Liquid purified Ig fraction Preservative: 0.09% (W/V) sodium azide
Concentration:	lot specific
Purification:	Affinity chromatography on Protein A
Conjugation:	Unconjugated
Storage:	Store the antibody undiluted at 2-8°C for one month or (in aliquots) at -20°C for longer. Avoid repeated freezing and thawing.
Stability:	Shelf life: one year from despatch.
Predicted Protein Size:	86114 Da
Gene Name:	SMAD specific E3 ubiquitin protein ligase 1
Database Link:	Entrez Gene 75788 Mouse Entrez Gene 57154 Human Q9HCE7



[View online »](#)

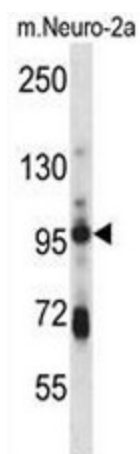
Background: This gene encodes a ubiquitin ligase that is specific for receptor-regulated SMAD proteins in the bone morphogenetic protein (BMP) pathway. A similar protein in *Xenopus* is involved in embryonic pattern formation. Alternative splicing results in multiple transcript variants encoding different isoforms. An additional transcript variant has been identified, but its full length sequence has not been determined.

Synonyms: SMURF 1, SMURF-1, KIAA1625

Protein Families: Druggable Genome

Protein Pathways: Endocytosis, TGF-beta signaling pathway, Ubiquitin mediated proteolysis

Product images:



SMURF1 Antibody (Center) western blot analysis in mouse Neuro-2a cell line lysates (35ug/lane). This demonstrates the SMURF1 antibody detected the SMURF1 protein (arrow).